



Wilkinson Way, W4 5XF

A unique one-bedroom end of terrace house with a private west-facing garden and off-street parking. The property comprises a double bedroom, white bathroom suite, 14'3 reception room with vaulted ceiling, fully integrated kitchen/breakfast room. Ideally located in this quiet cul de sac development offering close proximity to Southfield Park and numerous transport facilities including Turnham Green Station. Ealing Council Band D. Offered unfurnished. Available 14th April

£1,950 Per Calendar Month

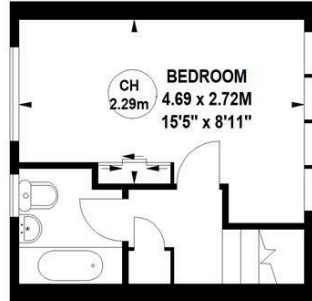
- Double Bedroom
- West Facing Garden
- Off Street Parking
- Vaulted Ceiling
- Quiet Cul de sac
- Great Location
- End of Terrace
- Ealing Council Band D
- Offered Unfurnished
- Available 14th April

Wilkinson Way, W4

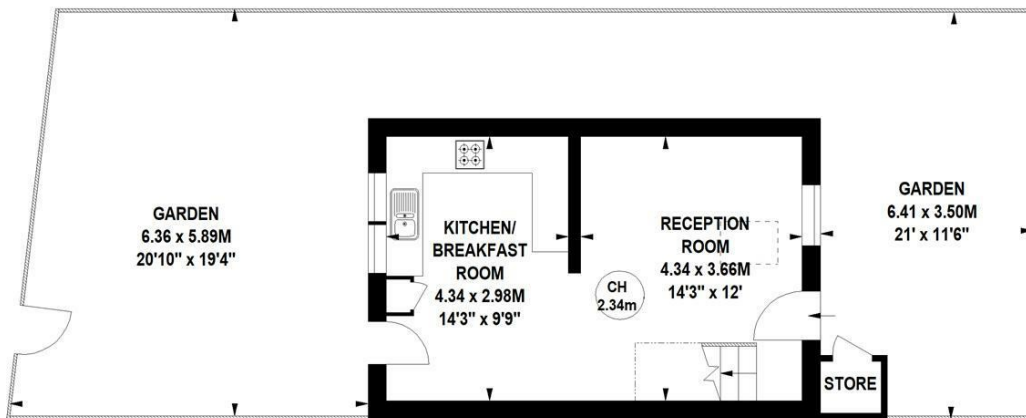
Approximate gross internal area

50.26 sq m / 541 sq ft

Key :
CH - Ceiling Height

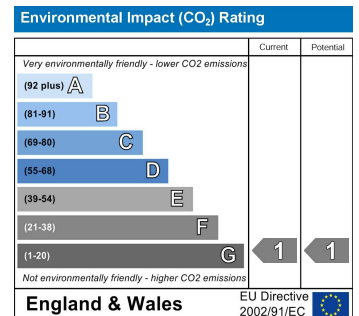
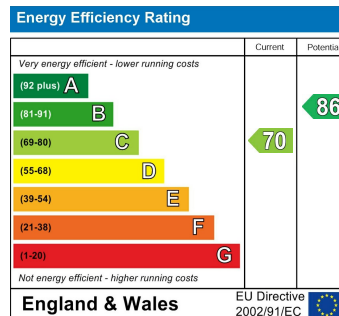


First Floor



Ground Floor

Not to scale, for guidance only and must not be relied upon as a statement of fact.
All measurements and areas are approximate only



5-7 Turnham Green Terrace, Chiswick, London, W4 1RG

Tel 020 8747 8800

E-mail lettings@whitmanandco.com

Website www.whitmanandco.com



MISREPRESENTATION ACT 1967

Whitman & Co. for themselves and for the vendors give notice that these particulars do not constitute any part of, an offer of contract. All statements contained in these particulars are made without responsibility on the part of Whitman & Co. or the vendor. None of the statements contained in these particulars is to be relied upon as statements or representations of facts. Any intending purchaser must satisfy himself by inspection or otherwise as to the correctness of each of the statements contained in these particulars. The vendor does not make or give, and neither Whitman & Co. or any person in their employment has any authority to make or give, any representation or warranty whatever in relation to the property.