



Rothschild Road, London, W4  
£810,000

**WHITMAN & CO.**

SALES · LETTINGS · COMMERCIAL





A unique freehold period property hidden away from the road located on this popular residential street a short walk from Chiswick High Road. The house is well presented throughout whilst also offering the potential to extend further STPP. The accommodation on the ground floor comprises an entrance hall with doors onto the garden, a 19'5 reception room, a fitted kitchen with a utility room, a second reception room/bedroom three, a separate shower and cloakroom and a lovely secluded wrap-around garden. On the first floor are two double bedrooms with lovely open views and a family bathroom. The house is in an excellent location close to local gastro pubs, parks and Chiswick High Road's extensive facilities. Transport links include Chiswick Park and South Acton stations, local bus routes and the A4/M4 for routes in and out of London.

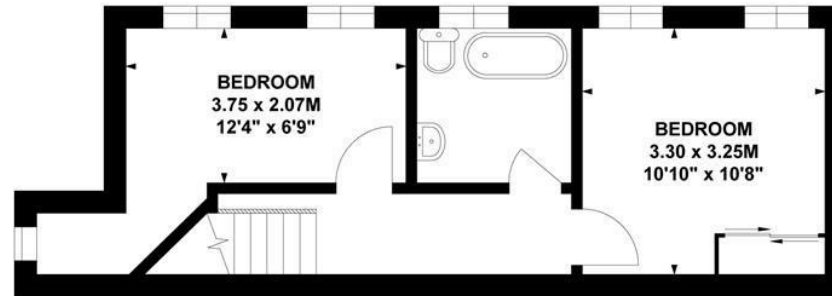




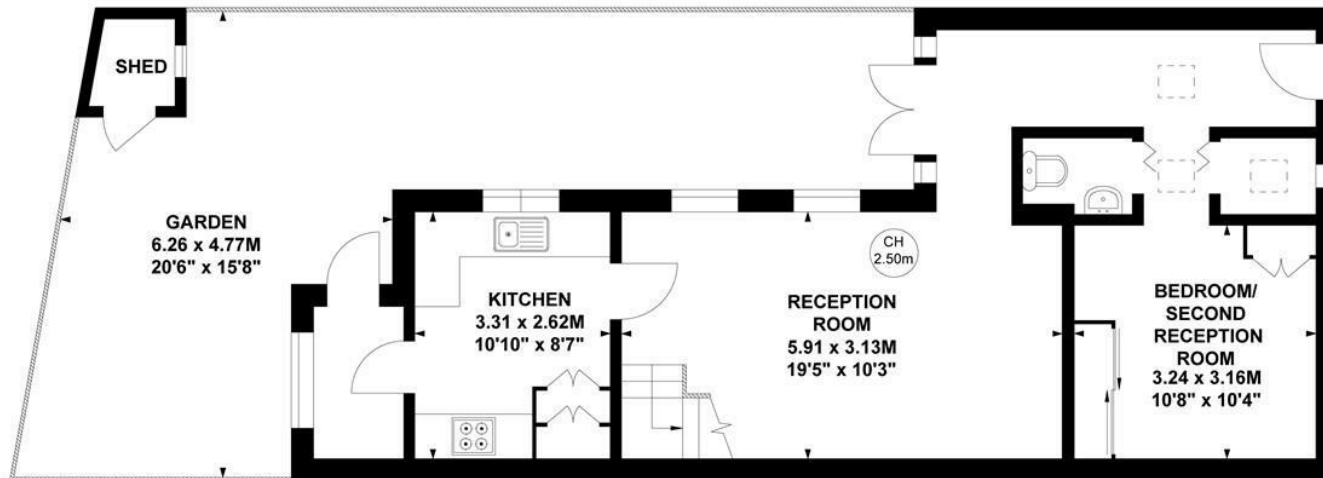
# Rothschild Road, W4

Approximate Gross Internal Area  
87.09 sq m / 937 sq ft

Key :  
CH - Ceiling Height



First Floor



Ground Floor

Not to scale, for guidance only and must not be relied upon as a statement of fact.  
All measurements and areas are approximate only

- Unique freehold period property
- Popular residential street
- 19'5 reception room

- Hidden away from the road
- Secluded wrap-around garden
- Close to numerous amenities

Tenure - Freehold  
Local authority - Ealing  
Council Tax - Band E



