



Fielding Road, London, W4  
Guide Price £1,500,000

**WHITMAN & CO.**  
SALES · LETTINGS · COMMERCIAL



An exceptionally light and spacious period family house offering an excellent balance of living and entertaining space, complemented by a south-facing garden and studio.

The property features a master suite, two further bedrooms, a formal living room, a 22-foot kitchen/breakfast room, a cloakroom, and a utility room.

This property is located on an extremely sought-after tree-lined residential road in the Bedford Park area, offering close proximity to Turnham Green tube station, local bus routes, and the extensive range of shops, bars, and restaurants on Chiswick High Road.



# Fielding Road, W4

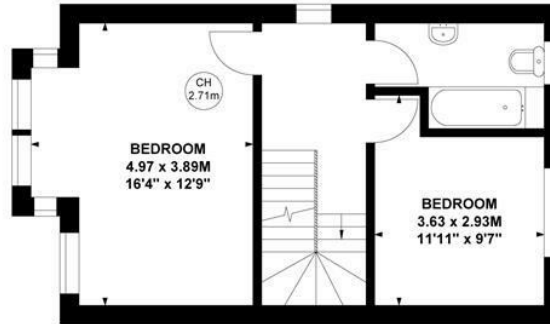


Approximate Gross Internal Area  
144.65 sq m / 1557 sq ft  
(Including Eaves Storage & Garden Room)

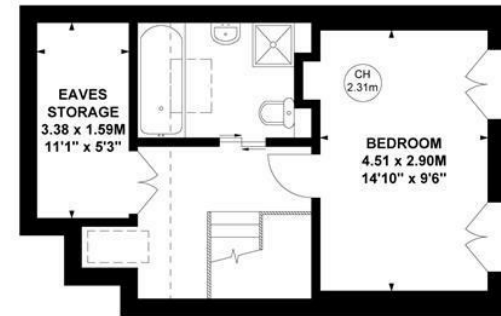
Eaves Storage  
5.37 sq m / 58 sq ft

Garden Room  
14.45 sq m / 115 sq ft

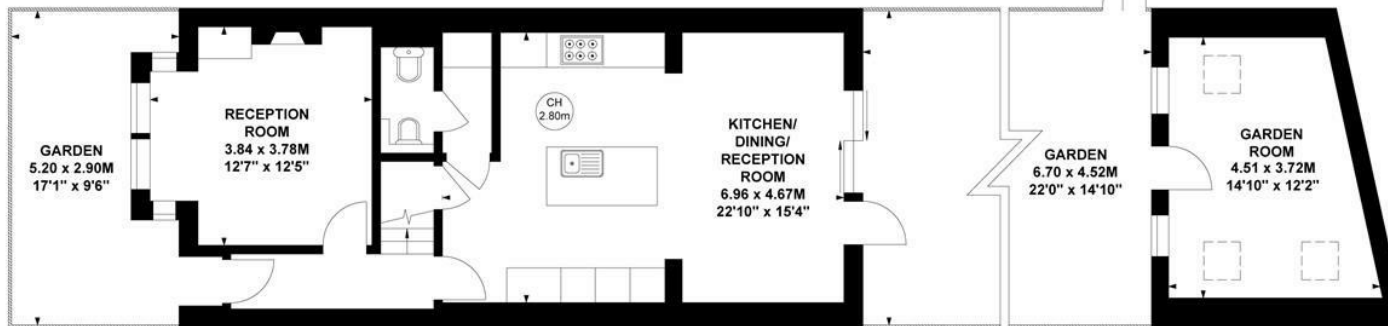
Key :  
CH - Ceiling Height



First Floor



Second Floor



Ground Floor

Not to scale, for guidance only and must not be relied upon as a statement of fact.  
All measurements and areas are approximate only

- South-facing garden with studio
- Excellent balance of living and entertaining space
- Catchment area of an outstanding primary school

- Bedford Park Conservation Area
- Fantastic transport links
- Sought-after residential road

Tenure - Freehold  
Local Authority - Hounslow  
Council Tax - Band D

