



Chiswick Staithe, London, W4  
Guide Price £1,250,000

**WHITMAN & CO.**  
SALES · LETTINGS · COMMERCIAL





An immaculately presented four-storey townhouse located within the award-winning Chiswick Staithe riverside development in the Grove Park area of Chiswick. The house offers an excellent balance of living and entertaining space.

The accommodation comprises a fabulous 28'8 first-floor reception room with a bespoke open plan kitchen with views to the River, a primary bedroom suite with ensuite bathroom and extensive fitted wardrobes, two further double bedrooms, a family bathroom, ground floor playroom/bedroom four, utility room, gym/store room, and large loft. The house has a private landscaped garden which leads directly onto extensive communal gardens that front the river and also benefits from off-street parking.

Chiswick Staithe is well located for Dukes Meadows playing fields, Chiswick House and Grounds and local shops and pubs.

Transport links include Chiswick mainline station (10-minute walk), local bus routes and the A4/M4 for routes in and out of London.





# Chiswick Staithe, W4

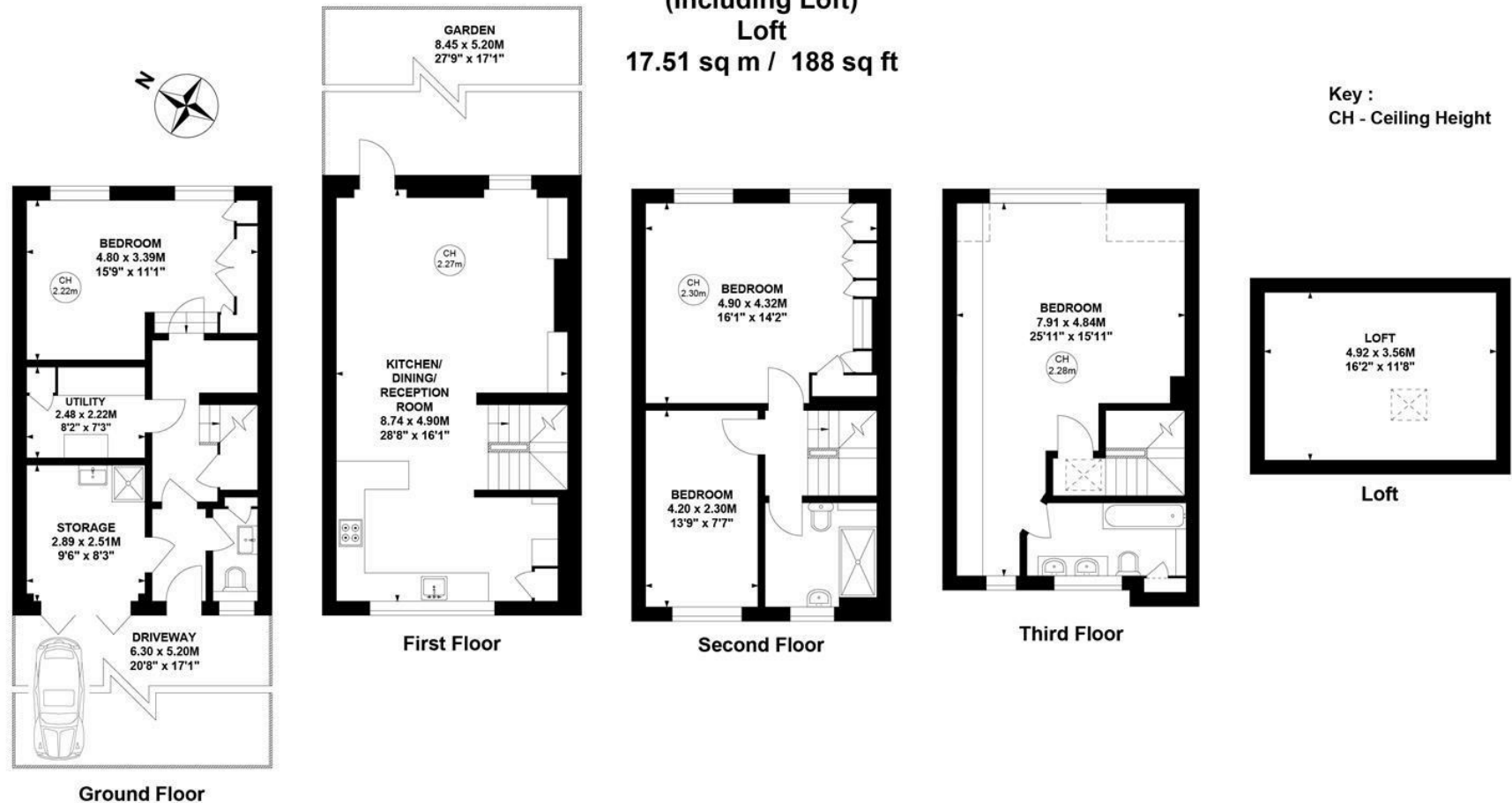
Approximate gross internal area

181.79 sq m / 1957 sq ft

(Including Loft)

Loft

17.51 sq m / 188 sq ft



Not to scale, for guidance only and must not be relied upon as a statement of fact.  
All measurements and areas are approximate only

- Four storey freehold townhouse

- Stunning 28'8" reception room with open plan kitchen

- River views from the front of the house

- Private garden and extensive riverside communal gardens

- Off street parking

- Three/four bedrooms

Tenure - Freehold

Estate charge - £1300 pa

Local Authority - Hounslow

Council Tax - Band G



