



## Cranbrook Road, Chiswick, W4 2LH

A beautifully presented two bedroomed garden flat situated in the heart of central Chiswick within this period Victorian house just moments from main high road with its array of boutique shops and restaurants, main retailers include M&S, Waitrose, Sainsbury, Tesco & The Co-op.

Accommodation provides: 22'1 x 14'9 large open plan living area incorporating living and dining areas with a galley style modern fitted kitchen, master bedroom with luxury ensuite shower room further bedroom and separate bathroom, fitted storage cupboards, small central court yard with private rear patio garden.

Both Turnham Green & Stamford Brook tube stations are within easy reach, numerous local bus routes with convenient vehicular access via A4/M4 to central London, Heathrow & The West. Hounslow Council Band D. EPC: C. The apartment is offered unfurnished (some items in situ available to purchase) and available 29th November.

- Delightful two bedroomed garden flat
- Within this period Victorian building
- Located moments from Chiswick High Road
- Great for transport links & Amenities
- Spacious open plan living area
- Galley style modern fitted kitchen
- Master bedroom with Ensuite Shower room
- Further bedroom and bathroom
- Small courtyard and rear private garden
- Offered unfurnished & Available 29th November

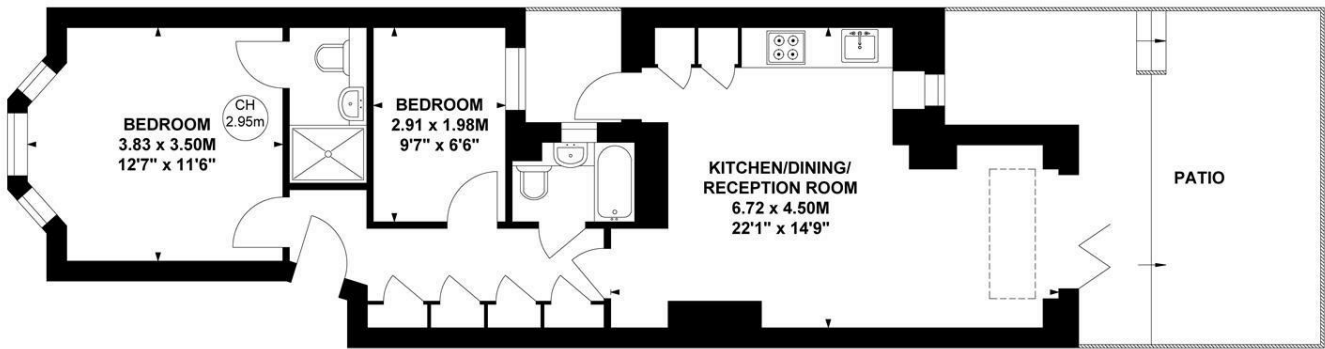
**£2,495 Per Calendar Month**

# Cranbrook Road, W4

Approximate gross internal area  
55.50 sq m / 597 sq ft

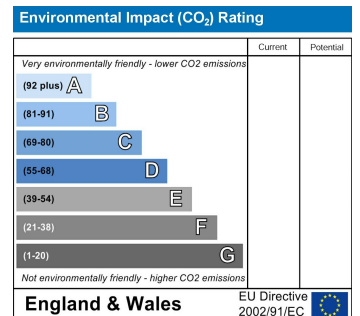
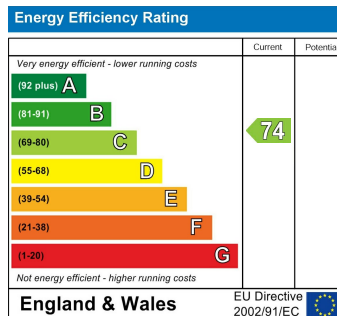


Key :  
CH - Ceiling Height



## Ground Floor

Not to scale, for guidance only and must not be relied upon as a statement of fact.  
All measurements and areas are approximate only



5-7 Turnham Green Terrace, Chiswick, London, W4 1RG

Tel 020 8747 8800

E-mail [lettings@whitmanandco.com](mailto:lettings@whitmanandco.com)

Website [www.whitmanandco.com](http://www.whitmanandco.com)