



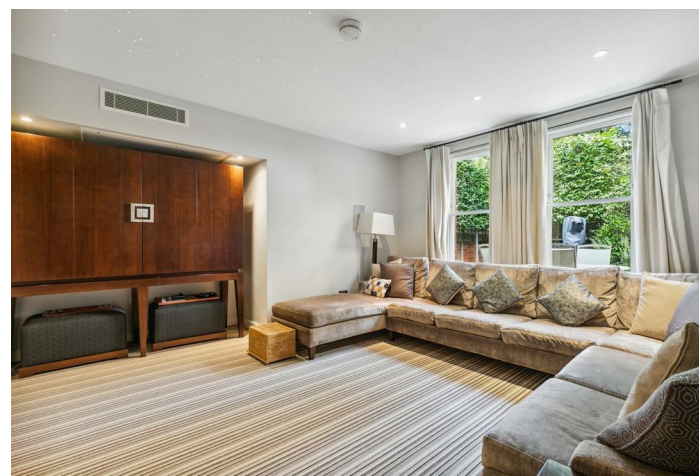
South Parade, London, W4
Guide Price £3,500,000

WHITMAN & CO.

SALES · LETTINGS · COMMERCIAL



An imposing seven-bedroom semi-detached corner house, offering an excellent balance of living and entertaining space, situated in the Bedford Park Conservation area and close to numerous amenities. The property benefits from fabulous proportions throughout with the accommodation comprising a primary bedroom suite with dressing room and ensuite, six further bedrooms, four further bathrooms (two ensembles), a large entrance hall, three reception rooms, a fully integrated kitchen/breakfast room, utility/cellar, cloakroom, a private, secluded, landscaped rear garden, and gated off-street parking with EV charging point. Ideally located within close proximity to Turnham Green tube station and the extensive range of shops, bars, and restaurants on Turnham Green Terrace and Chiswick High Road.

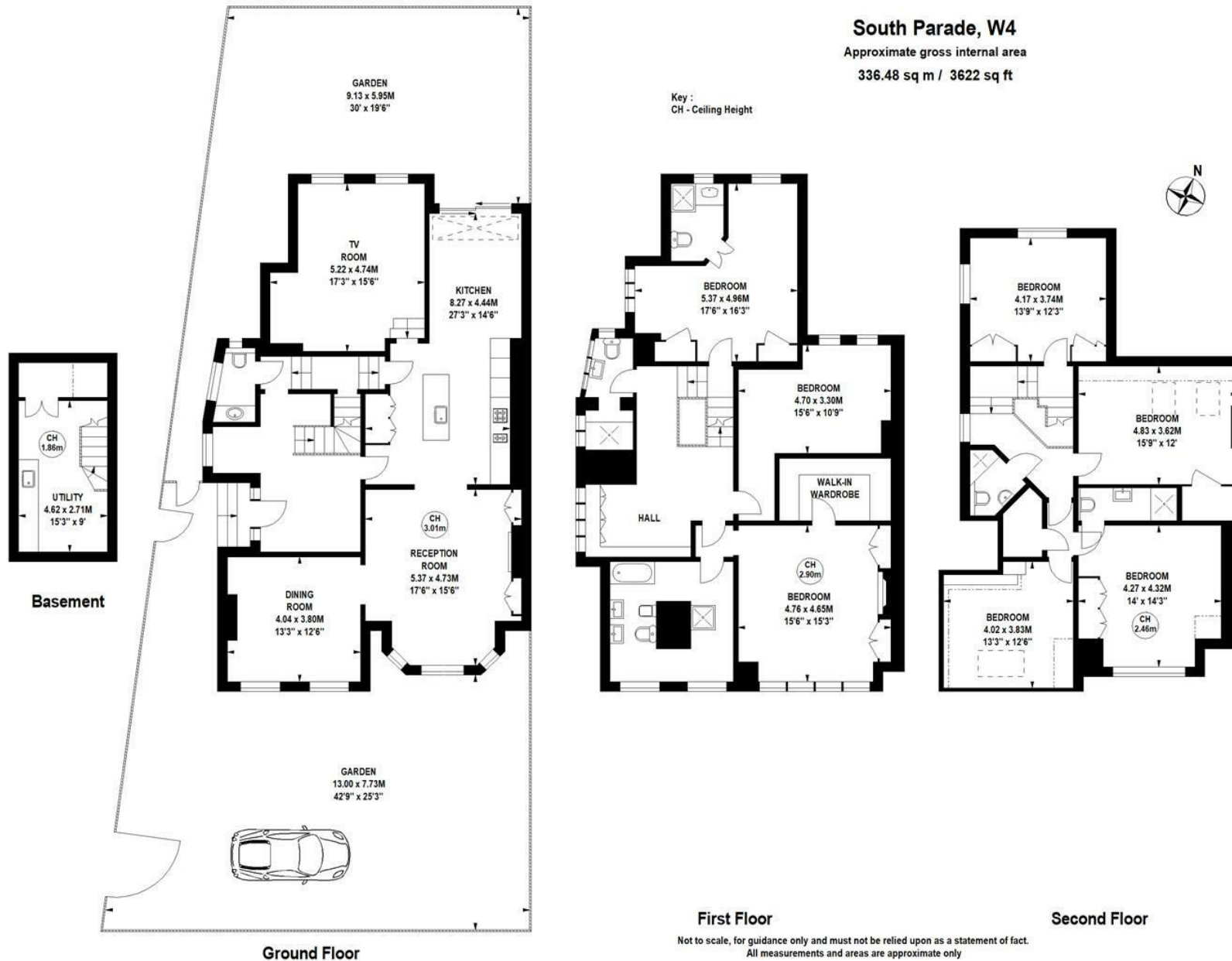


South Parade, W4

Approximate gross internal area

336.48 sq m / 3622 sq ft

Key :
CH - Ceiling Height



- Bedford Park Conservation Area
- Seven-bedrooms/five-bathrooms
- Gated off-street parking

- Semi-detached corner house
- Three reception rooms
- Sought after location

Tenure - Freehold
Local authority - Ealing
Council Tax - Band H

