



Chatsworth Road, London, W4  
£1,950,000

**WHITMAN & CO.**  
SALES · LETTINGS · COMMERCIAL

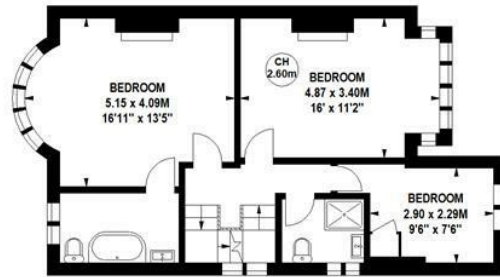




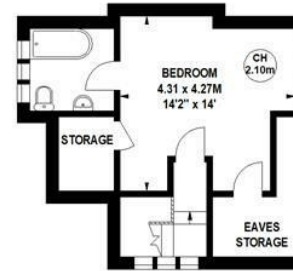
This outstanding semi-detached family home is situated on a sought-after road in the Grove Park area. It features a stunning landscaped garden that spans over 100 feet and includes a swimming pool and a home office. The property includes a spacious entrance hall, a double reception room with a bay window and feature fireplaces, leading to an extended kitchen/dining room with parquet Amtico flooring and ample natural light. Additionally, there is a utility room, a guest cloakroom, a principal bedroom suite with an ensuite bathroom, three further bedrooms, two more bathrooms (one ensuite), and eaves storage. The rear garden is a standout feature, measuring 118 feet and comprising a patio area, a lawn with mature borders, and a garden office. The garden also boasts a good-sized swimming pool. At the front of the property, there is a generously sized front garden and a shared driveway. Chatsworth Road is a tranquil residential street that provides convenient access to Chiswick House and Grounds, as well as being a short walk away from the River and Chiswick High Road's multitude of amenities. The property also benefits from excellent transport links, including proximity to Chiswick station, local bus routes, and the A4/M4 for travel in and out of London.







First Floor

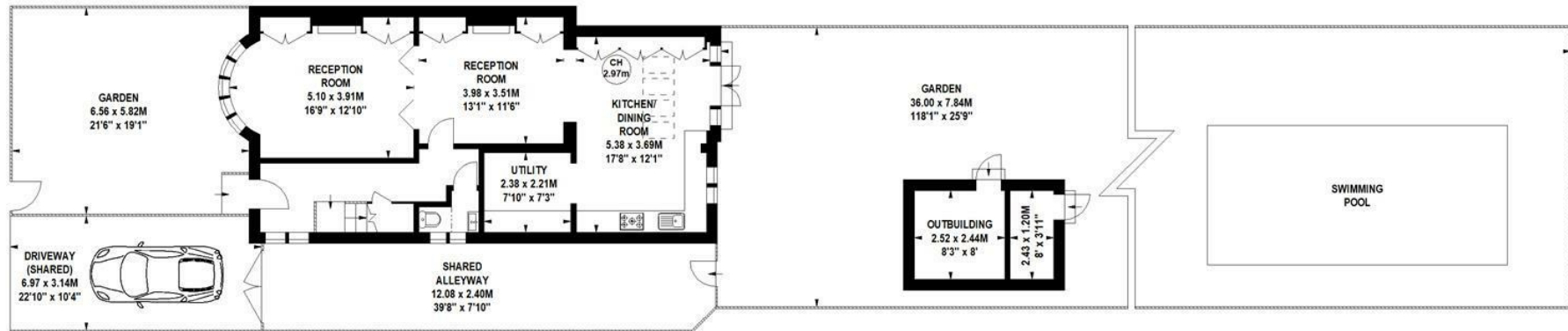


Second Floor

### Chatsworth Road, W4

Approximate gross internal area  
**172.70 sq m / 1859 sq ft**  
 (Including Eaves Storage & Outbuilding)  
 Eaves Storage  
**3.81 sq m / 41 sq ft**  
 Outbuilding  
**9.48 sq m / 102 sq ft**

Key :  
 CH - Ceiling Height



Ground Floor

Not to scale, for guidance only and must not be relied upon as a statement of fact.  
 All measurements and areas are approximate only

- Exceptional semi-detached family home
- Four beds/three baths
- Double reception room and kitchen/dining room

- 118' Landscaped garden with swimming pool
- Quiet residential street
- Close to numerous amenities

Tenure - Freehold  
 Local authority - Hounslow  
 Council Tax - Band G



