



Mayfield Road, W12 9LU

NEWLY RENOVATED THROUGHOUT - A lovely ground floor studio apartment situated in this popular residential development.

The accommodation provides a bright 317sq ft studio room with galley style modern fitted kitchen, built in breakfast bar, tiled bathroom suite, separate vanity space, entrance hall with storage cupboards, electric heating and hot water, new windows, carpets and a private designated parking space.

Local transport links include Stamford Brook Tube Station (Piccadilly & District lines) numerous local bus routes, including ease of access to Westfield White City with its extensive shopping and entertainment facilities. Convenient vehicular access via A4/M4 central London, Heathrow & The West. Hammersmith & Fulham Council Band B. EPC-D. The property is offered as furnished and available now.

- **NEWLY REFURBISHED**
- **Bright studio apartment**
- **Desirable development**
- **Designated parking space**
- **New windows**
- **Hammersmith and Fulham Council Band B**
- **Offered as furnished**
- **Available now**

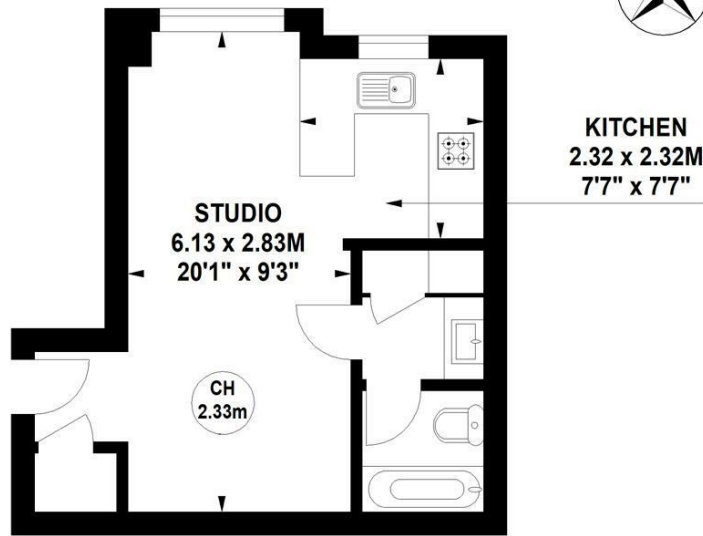
£1,400 Per Calendar Month

Mayfield Road, Wellington Court, W12

Approximate gross internal area

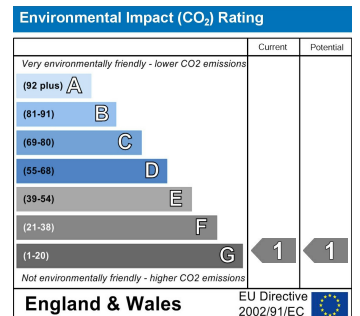
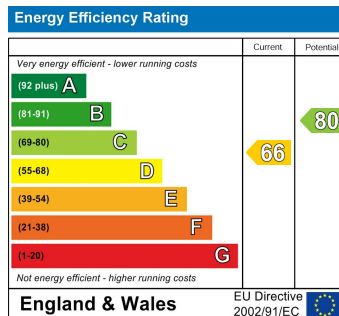
29.45 sq m / 317 sq ft

Key :
CH - Ceiling Height



Ground Floor

Not to scale, for guidance only and must not be relied upon as a statement of fact.
All measurements and areas are approximate only



5-7 Turnham Green Terrace, Chiswick, London, W4 1RG

Tel 020 8747 8800

E-mail lettings@whitmanandco.com

Website www.whitmanandco.com



MISREPRESENTATION ACT 1967

Whitman & Co. for themselves and for the vendors give notice that these particulars do not constitute any part of, an offer of contract. All statements contained in these particulars are made without responsibility on the part of Whitman & Co. or the vendor. None of the statements contained in these particulars is to be relied upon as statements or representations of facts. Any intending purchaser must satisfy himself by inspection or otherwise as to the correctness of each of the statements contained in these particulars. The vendor does not make or give, and neither Whitman & Co. or any person in their employment has any authority to make or give, any representation or warranty whatever in relation to the property.