



## Graham Road, London, W4 5DR

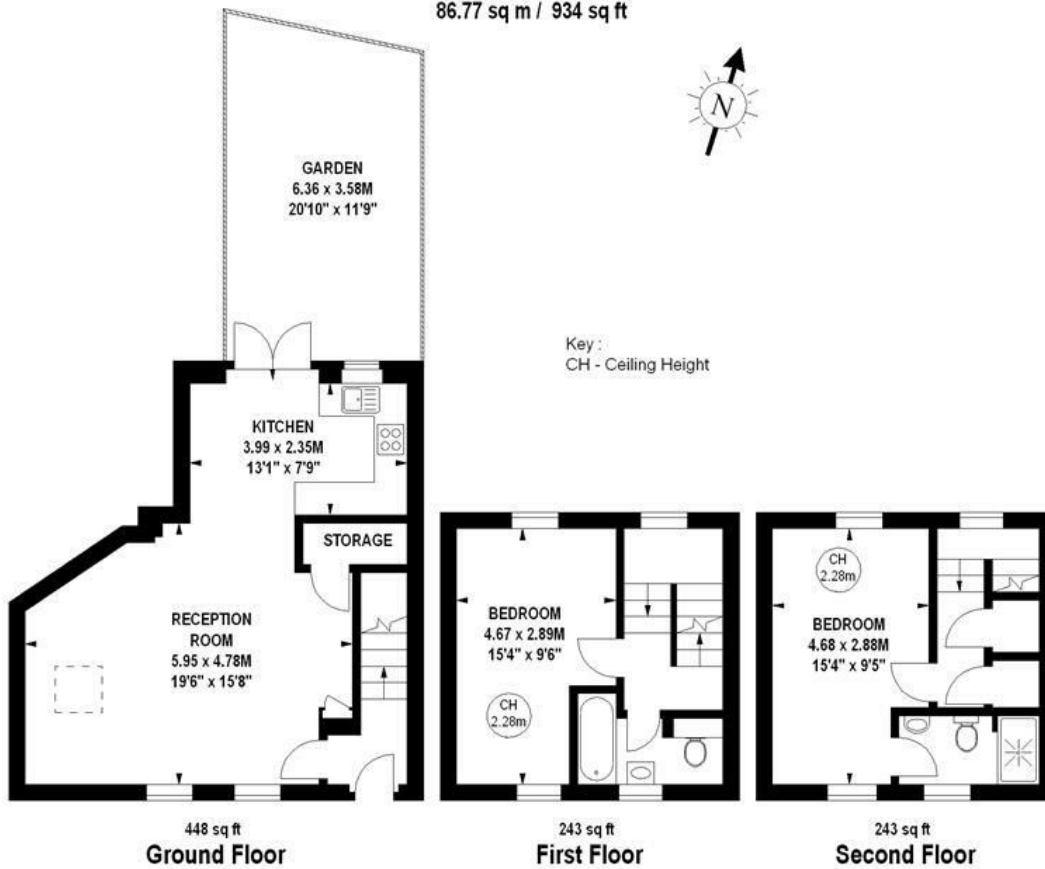
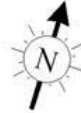
A beautifully presented two bedroomed end of terrace house situated in this very popular residential road, within a short walk of local amenities and shopping. Further afield are the more extensive boutique shopping and restaurant facilities of Chiswick's main high street. Accommodation is presented over three floors and comprises of; a large open plan living area, fitted kitchen with Kashmir White granite worktops, under stairs cupboard, two double bedrooms, main bathroom and further shower room, landscaped private rear garden, allocated parking space, electric heating and hot water. Local transport links include both Chiswick Park and Turnham Green tube stations, numerous local bus routes and convenient vehicular access via A4/M4 Central London, Heathrow and The West. . EPC-E. Ealing Council Tax Band E. The property is available 11th September and is offered as unfurnished

- Very nicely presented
- Lovely residential area
- Great for transport links
- Open plan living area
- Fitted galley style kitchen
- Two double bedrooms
- Bathroom and further shower room
- Landscaped private rear garden
- Private parking area
- Available 11th September

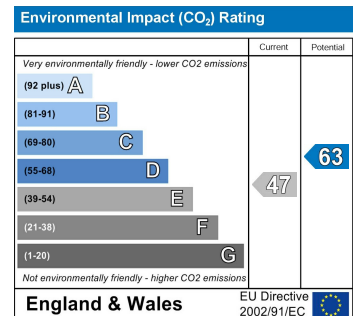
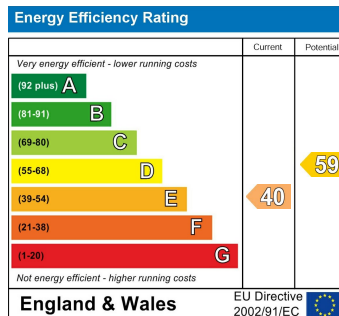
**£2,500 Per Calendar Month**

# Graham Road, W4

Approximate gross internal area  
86.77 sq m / 934 sq ft



The floor plan is not to scale and measurements and areas shown are approximate and therefore should be used for illustrative purposes only. The plan has been prepared in accordance with the RICS code of Measuring Practice and whilst we have confidence in the information produced, it must not be relied on. If there is any aspect of particular importance, you should carry out or commission your own inspection of the property.  
Copyright of FeaturePRO.



5-7 Turnham Green Terrace, Chiswick, London, W4 1RG  
Tel 020 8747 8800  
E-mail [lettings@whitmanandco.com](mailto:lettings@whitmanandco.com)  
Website [www.whitmanandco.com](http://www.whitmanandco.com)