



Hamilton Road, London, W4
Guide Price £1,000,000

WHITMAN & CO.

SALES · LETTINGS · COMMERCIAL



A rare opportunity to purchase an unmodernised end-of-terrace period property with generous proportions located on this popular residential road in the catchment of the OFSTED-rated 'Outstanding' Southfield primary school. Already a spacious house with a front and rear loft conversion and ground floor extension the house offers the ingoing purchaser the chance to remodel and extend further to create a fabulous family home. The accommodation comprises four bedrooms, a fifth bed/study, a front reception room with bay window, a 17'2 rear reception room, a kitchen, a garage/shed and a 30' garden with side access. Hamilton Road is located just north of the Bedford Park area of Chiswick within a short walk of Chiswick High Road's extensive facilities and a couple of minute's walk to Southfield Park. Transport links include Turnham Green station, local bus routes and the A4/M4 for routes in and out of London. No onward chain.



Hamilton Road, W4

Approximate gross internal area

147.62 sq m / 1589 sq ft

(Including Eaves Storage & Excluding Shed)

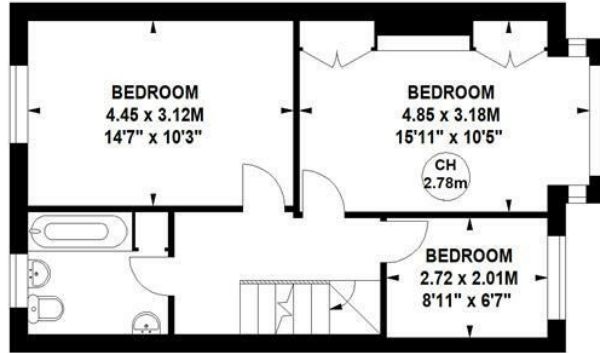
Eaves Storage

5.39 sq m / 58 sq ft

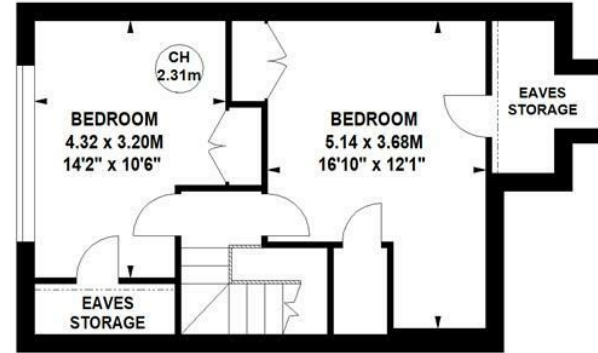
Shed

14.03 sq m / 151 sq ft

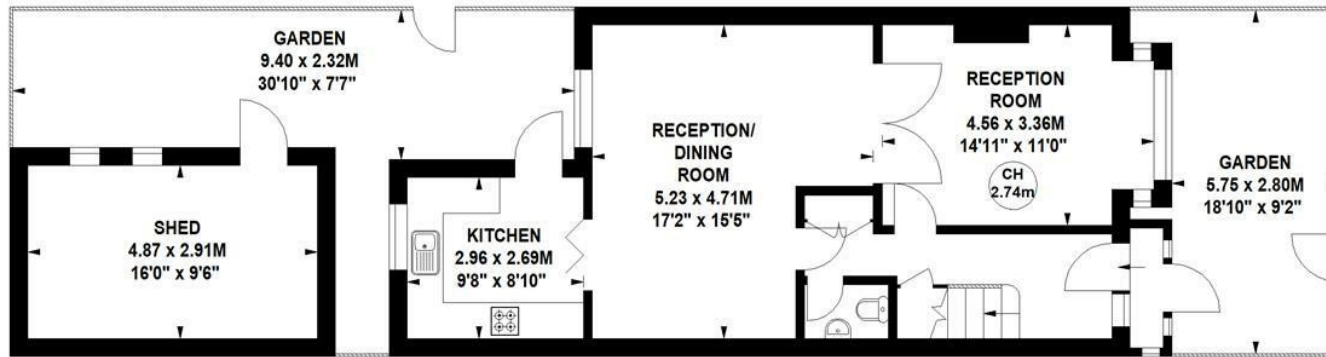
Key :
CH - Ceiling Height



First Floor



Second Floor



Ground Floor

Not to scale, for guidance only and must not be relied upon as a statement of fact.
All measurements and areas are approximate only

- Unmodernised end of terrace house
- Excellent proportions
- Catchment of Southfield primary school

- 30' Private garden
- Potential to extend and remodel
- No onward chain

Tenure - Freehold
Local Authority - Ealing
Council Tax - Band F

