



Somerset Road, London, W4 5DN

£499,950

**WHITMAN & CO.**

SALES · LETTINGS · COMMERCIAL



- Bright and spacious apartment
- 17'3 Reception room
- Close to numerous amenities
- Three bedrooms
- Private garden area
- Triple aspect apartment

Tenure - Leasehold  
 Lease length - 87 years remaining  
 Ground rent - £10 pa  
 Service charge - £1496 pa  
 Local authority - Ealing  
 Council tax - Band D

## THE PROPERTY

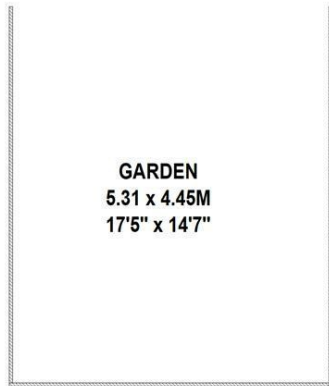
A well-presented light and spacious top floor three bedroom apartment located on this quiet residential street a short walk from Chiswick High Road. The flat totals 775 sqft with the accommodation comprising a good size reception room with space for a dining table and sofas, three bedrooms, bathroom with full bath with shower over, fitted kitchen, entrance hall with storage, south facing private garden area (17'5x14'7). The flat is located within a 10-minute walk of Chiswick High Road's shops, cafes and restaurants. Transport links include Turnham Green and Chiswick Park stations, local bus routes and the A4/M4 for routes in and out of London.

## Somerset Road, W4

Approximate gross internal area

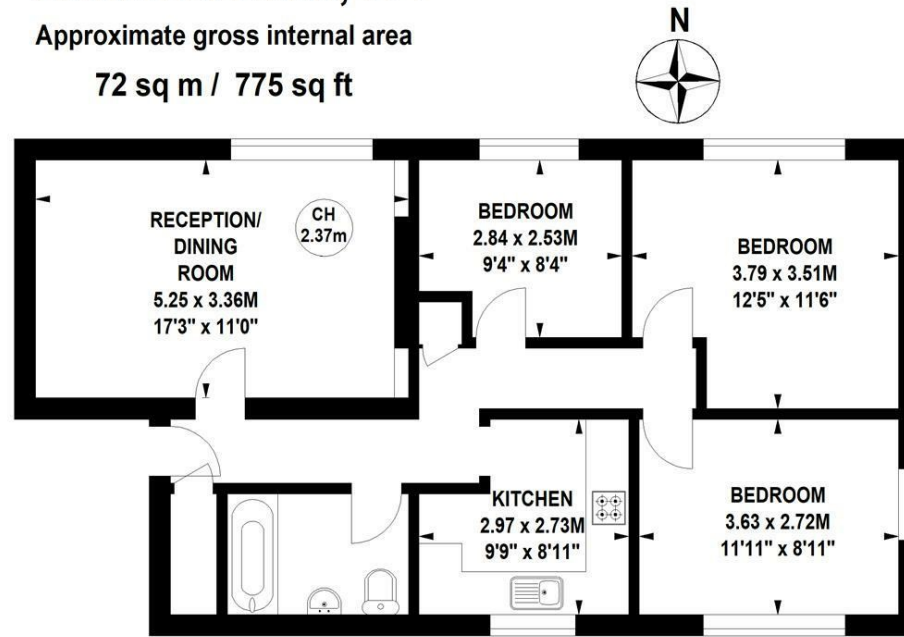
72 sq m / 775 sq ft

Key :  
 CH - Ceiling Height



### Ground Floor

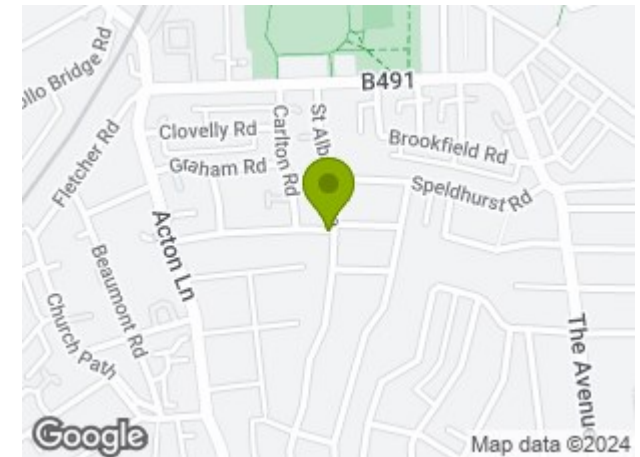
(Not shown in actual location / orientation)



### Second Floor

Not to scale, for guidance only and must not be relied upon as a statement of fact.  
 All measurements and areas are approximate only

## SITUATION



5-7 Turnham Green Terrace, Chiswick, London, W4 1RG

Tel 020 8747 8800

E-mail [sales@whitmanandco.com](mailto:sales@whitmanandco.com)

Website [www.whitmanandco.com](http://www.whitmanandco.com)