



## Elmwood Road, London, W4 3DY

A spacious one bedroom ground floor flat with a private 37' south-facing garden. Situated in this sought after residential street close to numerous amenities. The accommodation comprises a spacious double bedroom, 15'7" reception room, white bathroom suite, separate cloakroom, 11'5" fitted kitchen, private 37' south facing garden with side access. Ideally located in this tree-lined residential street offering close proximity to Chiswick (mainline) station, local bus routes, Chiswick House and Grounds and The River Thames. Local Authority - Hounslow. Council Tax - Band D. EPC-D. Offer unfurnished (with large wardrobe) and available 16th September.

- 37' south facing garden
- Freshly painted
- Large one double bedroom
- Sought after location
- Fantastic transport links
- Unfurnished (has a wardrobe)
- Available 16th September

**£1,900 Per Calendar Month**

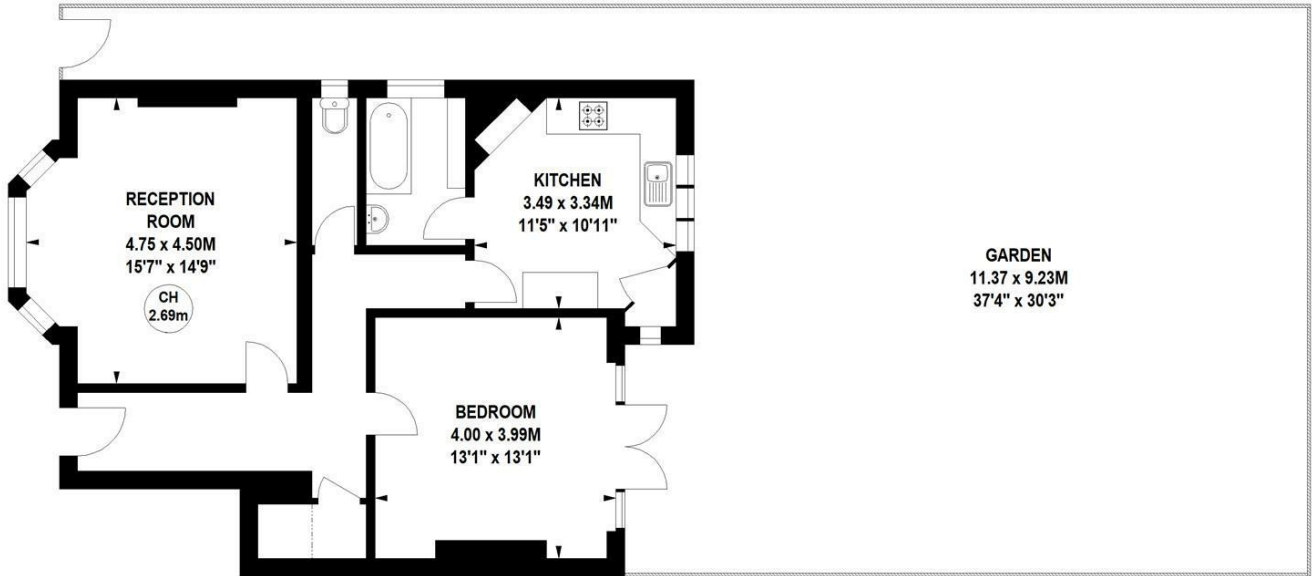
# Elmwood Road, W4

Approximate gross internal area

69.86 sq m / 752 sq ft

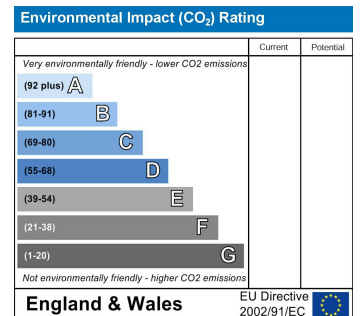
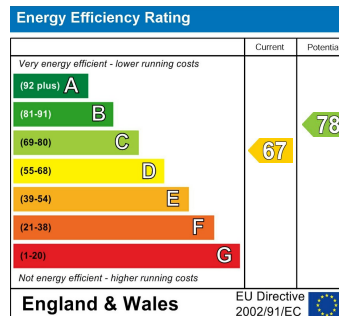


Key :  
CH - Ceiling Height



## Ground Floor

Not to scale, for guidance only and must not be relied upon as a statement of fact.  
All measurements and areas are approximate only



5-7 Turnham Green Terrace, Chiswick, London, W4 1RG

Tel 020 8747 8800

E-mail [lettings@whitmanandco.com](mailto:lettings@whitmanandco.com)

Website [www.whitmanandco.com](http://www.whitmanandco.com)