



Carlton Road, London, W4 5DY

Guide Price £1,000,000

**WHITMAN & CO.**

SALES · LETTINGS · COMMERCIAL



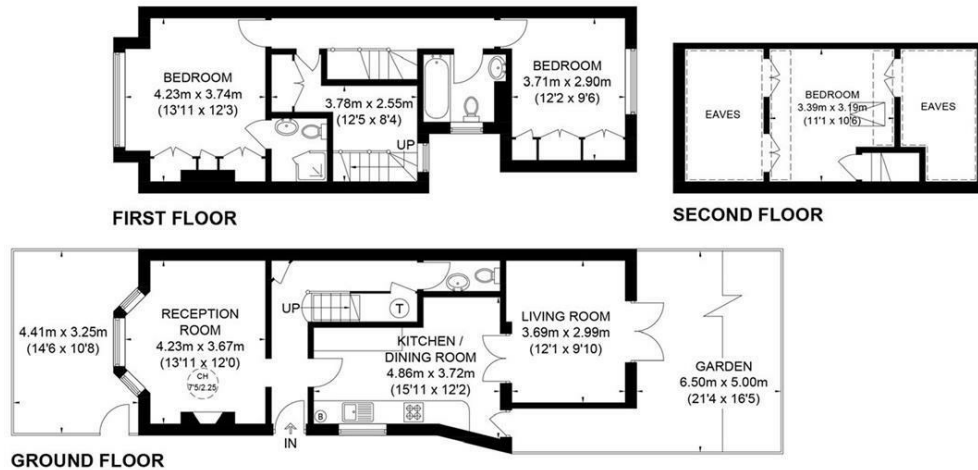
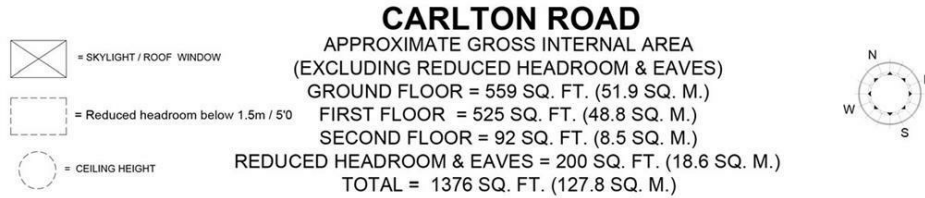
- Semi-detached period home
- Flexible reception space
- Close to numerous amenities

- Three beds plus study/two baths
- Private garden
- No onward chain

Tenure - Freehold  
Local Authority - Ealing  
Council Tax - Band F

## THE PROPERTY

A light and spacious semi-detached house offering an excellent balance of living and entertaining space located close to numerous amenities. The accommodation comprises a principal bedroom suite with a full-width double bedroom, fitted wardrobes and ensuite bathroom, two further bedrooms, a study, a family bathroom, two reception rooms, a fully fitted kitchen/breakfast room, cloakroom, and a private 21' garden. Ideally located within close proximity of Chiswick Park and Turnham Green tube stations, South Acton overground station, local bus routes and the extensive range of shops, bars and restaurants on Chiswick High Road. No onward chain.



This plan is for layout guidance only. Not drawn to scale unless stated. Windows and door openings are approximate. Whilst every care is taken in the preparation of this plan, please check all dimensions, shapes and compass bearings before making any decisions reliant upon them. Please be advised that Countrywide / our agents have not seen or reviewed any building regulations or planning permission in relation to works carried out to the property (ID457447)

## SITUATION



5-7 Turnham Green Terrace, Chiswick, London, W4 1RG

Tel 020 8747 8800

E-mail [sales@whitmanandco.com](mailto:sales@whitmanandco.com)

Website [www.whitmanandco.com](http://www.whitmanandco.com)



MISREPRESENTATION ACT 1967

Whitman & Co. for themselves and for the vendors give notice that these particulars do not constitute any part of, an offer of contract. All statements contained in these particulars are made without responsibility on the part of Whitman & Co. or the vendor. None of the statements contained in these particulars is to be relied upon as statements or representations of facts. Any intending purchaser must satisfy himself by inspection or otherwise as to the correctness of each of the statements contained in these particulars. The vendor does not make or give, and neither Whitman & Co. or any person in their employment has any authority to make or give, any representation or warranty whatever in relation to the property.