



Chiswick High Road, London, W4 2EF

A spacious recently refurbished studio apartment in this lovely location in the heart of Chiswick convenient for all amenities, just moments from Chiswick's main shopping area with its array of boutique shops, restaurants and retailers including M and S, Waitrose, Sainsbury, Tesco and Co-op. The accommodation provides a large open plan reception/bedroom, windows to front, feature fireplace, fitted shelving, nice size fitted kitchen, fitted shower room, gas fired central heating. Local transport links include both Stamford brook & Turnham Green tube stations, numerous local bus routes with convenient vehicular access via A4/M4/A40 to Central London, Heathrow and The west. Hounslow Council Tax Band C. EPC-D. No parking permit permissible. The property is part furnished and available 12th August

- Newly refurbished spacious apartment
- Lovely central Chiswick location
- Great for transport links
- Local shopping on your doorstep
- Large and bright reception/bedroom
- Fitted kitchen
- Shower room

£1,450 Per Calendar Month

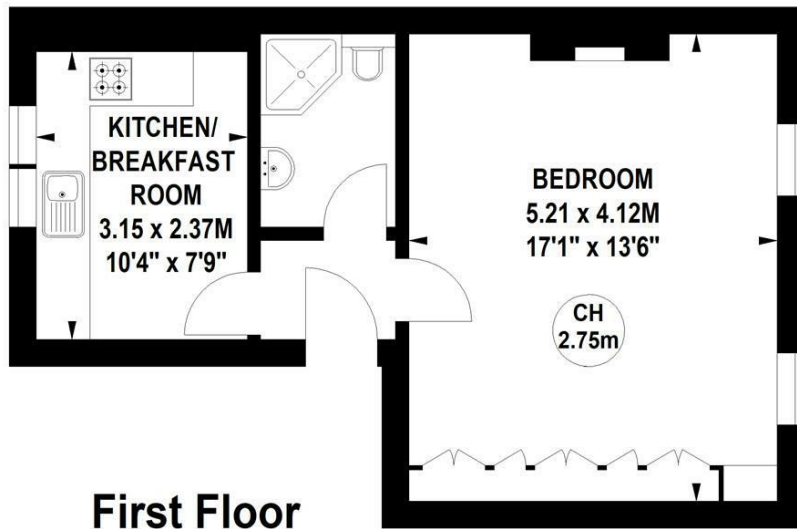
Chiswick High Road, W4

Approximate gross internal area

34.93 sq m / 376 sq ft

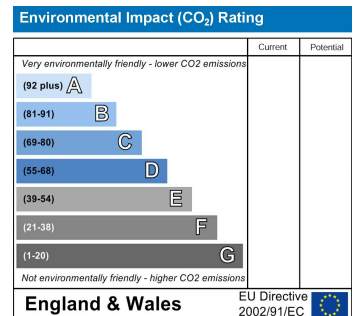
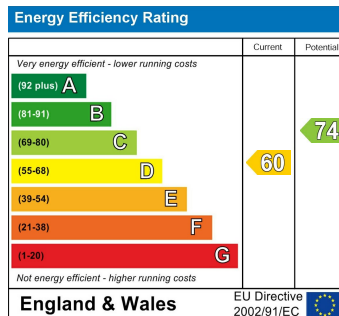


Key :
CH - Ceiling Height



First Floor

Not to scale, for guidance only and must not be relied upon as a statement of fact.
All measurements and areas are approximate only



5-7 Turnham Green Terrace, Chiswick, London, W4 1RG

Tel 020 8747 8800

E-mail lettings@whitmanandco.com

Website www.whitmanandco.com