



Heathfield Terrace, London, W4 4LP

£450,000

WHITMAN & CO.

SALES · LETTINGS · COMMERCIAL

- Sought After Location
- Newly Refurbished Luxury Apartment
- Off Street Parking
- Long Lease and Share in the Freehold
- Porter and Lift Access
- No Chain

Tenure - Leasehold with Share in the Freehold
 Lease Length - 999 Years remaining
 Ground Rent - Peppercorn
 Service Charge - Approx. £6,000 pa
 Local Authority - Hounslow
 Council Tax - Band C

THE PROPERTY

A newly refurbished, fourth-floor luxury one-bedroom flat ideally located with commanding views over Turnham Green. The flat features a 15' reception room, a bespoke fully integrated kitchen, a double bedroom with extensive built-in storage, a video entry phone, an automatic lift, a porter, communal hot water, and central heating. It also includes a share in the freehold. Ideally situated just south of Chiswick High Road, offering close proximity to shops, bars, and restaurants, as well as numerous transport facilities. No chain.

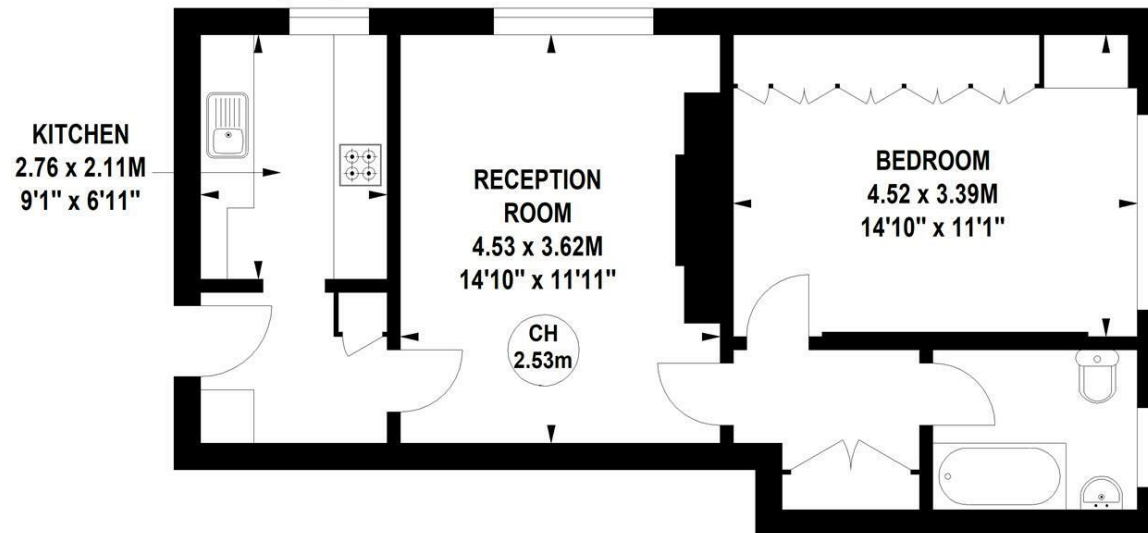
Heathfield Court, Heathfield Terrace, W4

Approximate gross internal area

51.56 sq m / 555 sq ft



Key :
CH - Ceiling Height



Fourth Floor

Not to scale, for guidance only and must not be relied upon as a statement of fact.
 All measurements and areas are approximate only

SITUATION



5-7 Turnham Green Terrace, Chiswick, London, W4 1RG

Tel 020 8747 8800

E-mail sales@whitmanandco.com

Website www.whitmanandco.com



MISREPRESENTATION ACT 1967

Whitman & Co. for themselves and for the vendors give notice that these particulars do not constitute any part of, an offer of contract. All statements contained in these particulars are made without responsibility on the part of Whitman & Co. or the vendor. None of the statements contained in these particulars is to be relied upon as statements or representations of facts. Any intending purchaser must satisfy himself by inspection or otherwise as to the correctness of each of the statements contained in these particulars. The vendor does not make or give, and neither Whitman & Co. or any person in their employment has any authority to make or give, any representation or warranty whatever in relation to the property.