



Bedford Road, London, W4 1UH

£549,950

WHITMAN & CO.

SALES · LETTINGS · COMMERCIAL

- Recently refurbished two double bedroom apartment
- Light and spacious rooms
- Lovely open aspect from all windows
- Newly fitted kitchen and bathroom
- Sought after Bedford Park conservation area
- No onward chain

Tenure - Leasehold with share of freehold
 Lease Length - 970 Years remaining
 Ground rent - Peppercorn
 Service Charge inc. Reserve Fund - £5434 pa
 Local Authority - Ealing
 Council Tax - Band D

THE PROPERTY

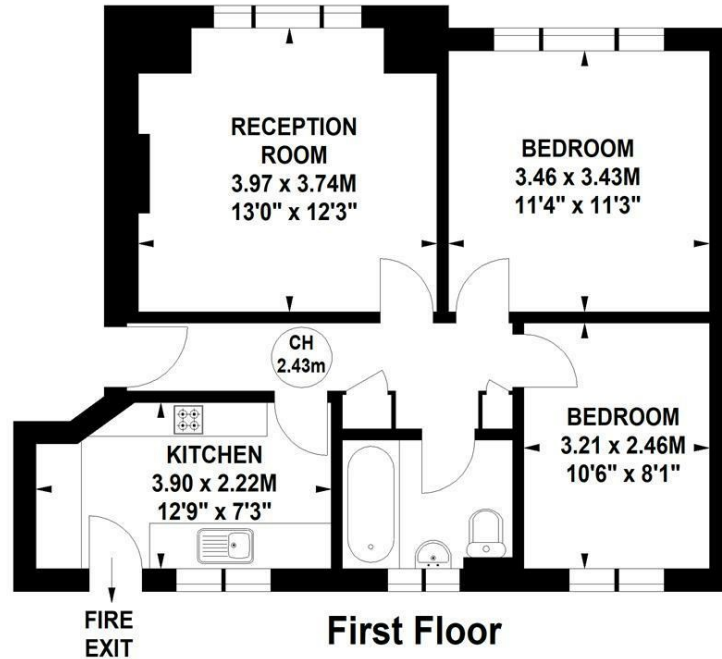
An immaculate, recently refurbished first-floor apartment with lovely open aspects from all windows, forming part of this private development in the Bedford Park conservation area located moments from Turnham Green station. The flat has been finished to a very high standard with neutral decor with the accommodation comprising a spacious reception room with views down Queen Annes Grove, two double bedrooms, a luxury bathroom, a fully fitted kitchen with a door leading onto the rear stairs which provide access to the extensive communal gardens, background heating and hot water included in the service charge, share in the freehold. The flat is located on Bedford Road, a premier road in the Bedford Park area, within a short walk of Turnham Green station, local parks and the extensive shopping, cafe and restaurant facilities on Chiswick High Road and Turnham Green Terrace. No chain.

St. Catherines Court, W4

Approximate gross internal area

57.60 sq m / 620 sq ft

Key :
 CH - Ceiling Height



Not to scale, for guidance only and must not be relied upon as a statement of fact.
 All measurements and areas are approximate only

SITUATION



5-7 Turnham Green Terrace, Chiswick, London, W4 1RG

Tel 020 8747 8800

E-mail sales@whitmanandco.com

Website www.whitmanandco.com