

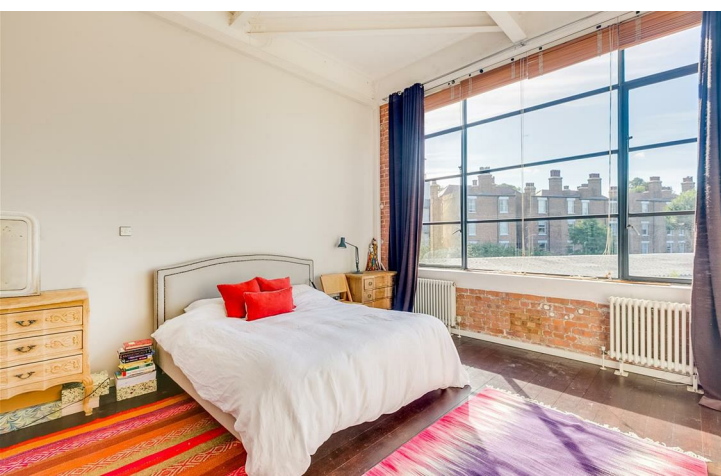


Chiswick Green Studios, London, W4
Guide Price £1,500,000

WHITMAN & CO.
SALES · LETTINGS · COMMERCIAL

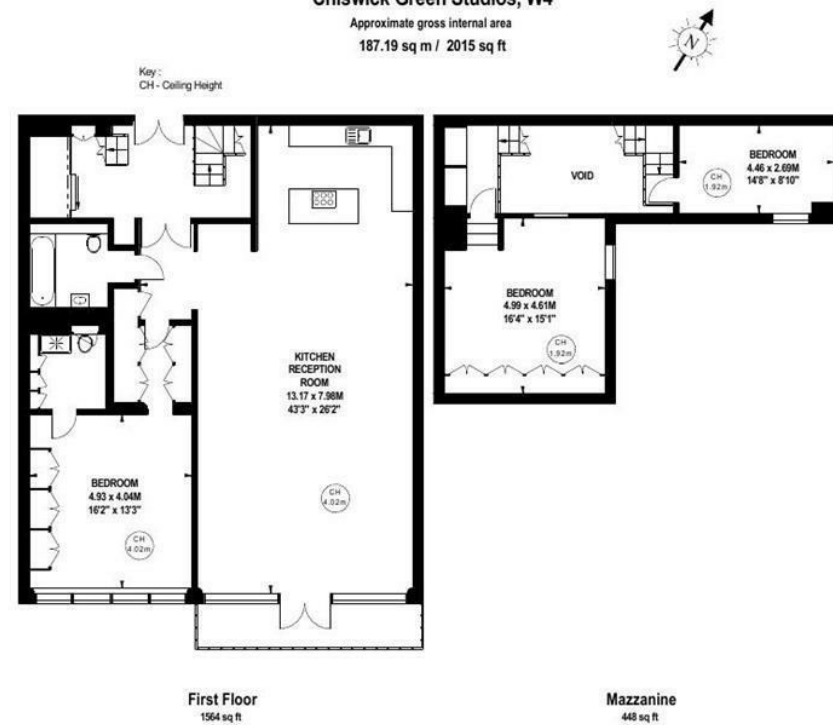


A fabulous loft apartment in this highly sought-after and exclusive warehouse development in the heart of Chiswick benefitting from portage, secure underground parking and on site gym. Boasting stunning proportions and a huge amount of light the apartment comprises a 42' double-height reception room with bespoke fully integrated kitchen area, wide gauge wooden flooring, original steel beams and large windows with doors to the private balcony, principal bedroom suite with built-in wardrobes and ensuite bathroom, two further bedrooms, main bathroom, impressive entrance hall with feature glass stairs, utility room, extensive built-in storage throughout and lift access. Chiswick Green Studios is located within a short walk of numerous local shops, cafes and restaurants both in the immediate vicinity and on Chiswick High Road. Transport links include Chiswick Park and Turnham Green Stations, the 94 bus route and the A4/M4 for routes in and out of London. No onward chain.



Chiswick Green Studios, W4

Approximate gross internal area
187.19 sq m / 2015 sq ft



The floor plan is not to scale and measurements and areas shown are approximate and therefore should be used for illustrative purposes only. The plan has been prepared in accordance with the RICS code of Measuring Practice and whilst we have confidence in the information produced, it must not be relied on. If there is any aspect of particular importance, you should carry out or commission your own inspection of the property.
Copyright of FeaturePRO.

- In excess of 2000 sqft
- Exclusive warehouse conversion
- Concierge and on site gym

- 42' Double height reception room
- Secure underground parking
- No onward chain

Tenure - Leasehold with share of freehold
Lease Length - 971 Years remaining
Ground Rent - £0 pa
Service Charge - £5090.24 pa
Sinking Fund - £1312 pa
Local Authority - Ealing
Council Tax - Band G

