



Fitzroy Crescent, London, W4 3EL

Guide Price £1,300,000

WHITMAN & CO.

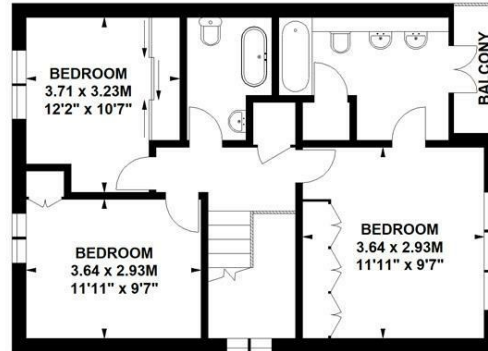
SALES · LETTINGS · COMMERCIAL

- SOLD - CONTRACTS EXCHANGED
- Award-winning development
- Sought after location
- Semi-detached house
- 42' West facing garden
- No chain

Tenure - Freehold
Local Authority - Hounslow
Council Tax - Band G

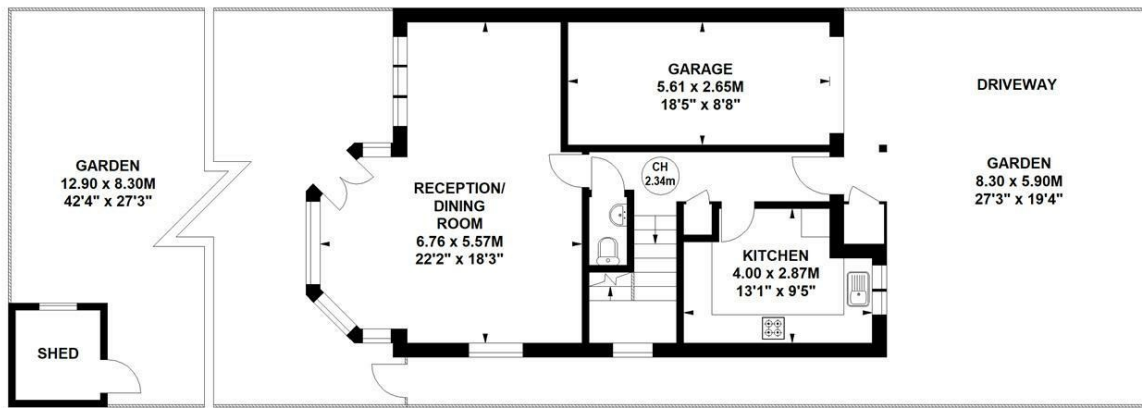
Fitzroy Crescent, W4

Approximate gross internal area
132.41 sq m / 1425 sq ft



First Floor

Key :
CH - Ceiling Height



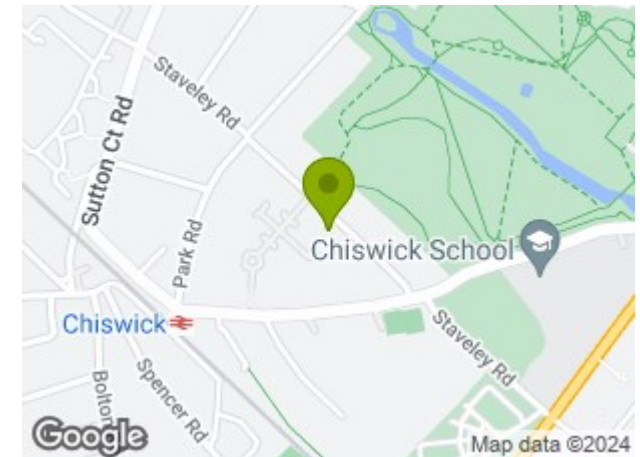
Ground Floor

Not to scale, for guidance only and must not be relied upon as a statement of fact.
All measurements and areas are approximate only

THE PROPERTY

SOLD - CONTRACTS EXCHANGED - An immaculately present semi-detached home located in this award-winning development in the Grove Park area of Chiswick. The house has been sympathetically updated throughout with the accommodation comprising a 22'2x18'3 reception room, newly fitted kitchen, principal bedroom suite with luxurious ensuite and balcony, two further bedrooms, family bathroom, lovely west-facing garden, garage and off-street parking, and large loft. Fitzroy Crescent is very well located being close to Chiswick House and Grounds and the open spaces of Dukes Meadows whilst also being a short walk to Chiswick High Road's extensive facilities. Transport links include Chiswick Station, local bus routes and the A4/M4 for routes in and out of London.

SITUATION



5-7 Turnham Green Terrace, Chiswick, London, W4 1RG

Tel 020 8747 8800

E-mail sales@whitmanandco.com

Website www.whitmanandco.com

