



Acton Lane, London, W4 5DA

A spacious and immaculately presented two bedroomed apartment with the benefit of a private rear courtyard garden situated in this popular residential area, local convenience shopping is close at hand whilst further afield are the more extensive shopping and restaurants facilities along Chiswick's main thoroughfare main retailers include M&S, Waitrose, Sainsbury's, Tesco & The Co-op. Accommodation provides: 21'11 x 14'7 open plan living room with modern fitted galley style kitchen with breakfast bar, lightwells, wood flooring, doors leading onto private patio garden, master bedroom with luxury ensuite shower room, wood flooring, fixed mirror fronted wardrobes, further bedroom with lightwell, main large modern shower room with walk in cubicle, gas fired central heating. Local transport links include both Turnham Green & Chiswick Park Tube stations, numerous local bus routes with convenient vehicular access via A4/M4/A40 to central London, Heathrow & The West, the property is offered as unfurnished/part furnished and available now. EPC C. Ealing Council Tax Band D

- Popular Chiswick residential area
- Great for transport links
- Spacious modern open plan living area
- Modern galley style kitchen with breakfast bar
- Two double bedrooms
- Two luxury shower rooms
- Private landscaped patio garden
- Wood floors throughout
- Offered unfurnished/part furnished
- Available now

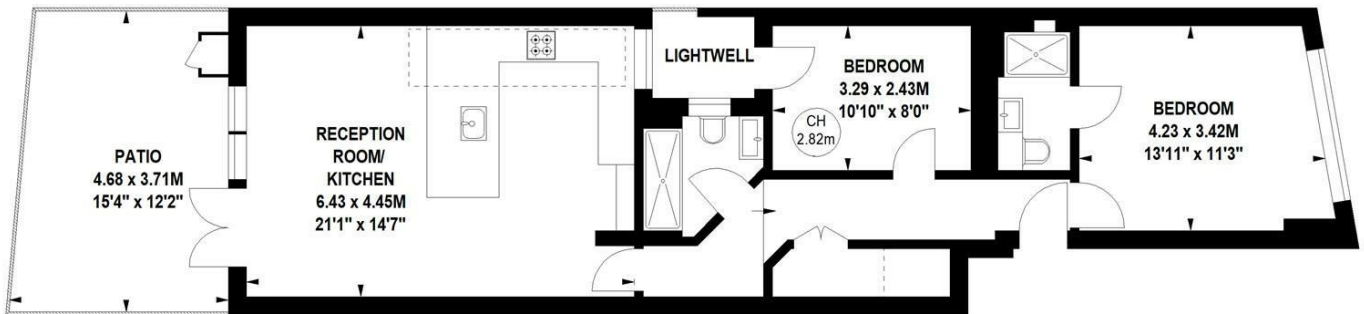
£2,600 Per Calendar Month

Acton Lane, W4

Approximate gross internal area
70.23 sq m / 756 sq ft

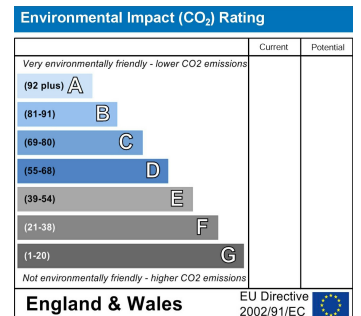
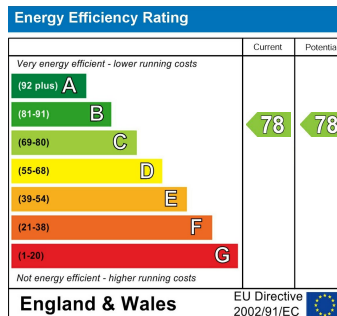


Key :
CH - Ceiling Height



Ground Floor

Not to scale, for guidance only and must not be relied upon as a statement of fact.
All measurements and areas are approximate only



5-7 Turnham Green Terrace, Chiswick, London, W4 1RG

Tel 020 8747 8800

E-mail lettings@whitmanandco.com

Website www.whitmanandco.com