



Heathfield Gardens, London, W4
Guide Price £1,895,000

WHITMAN & CO.
SALES · LETTINGS · COMMERCIAL



A rarely available period semi-detached Victorian family located on this wide tree-lined residential street that runs north off Turnham Green. The house is well presented throughout with the accommodation comprising a 28'11 double reception room with bay window, high ceilings and feature marble fireplaces, a kitchen/dining room, a top floor principal bedroom suite with ensuite bathroom with bath and shower, four further bedrooms, two further bathrooms (one ensuite), large open aspect mature garden, generous front garden, extensive built-in and eaves storage throughout. The house is a short walk from Chiswick High Road's shops, cafes and restaurants and also close to the river and Chiswick House and Grounds. Transport links include Chiswick Park and Gunnersbury stations, local bus routes and the A4/M4 for routes in and out of London.



Heathfield Gardens, W4

Approximate gross internal area

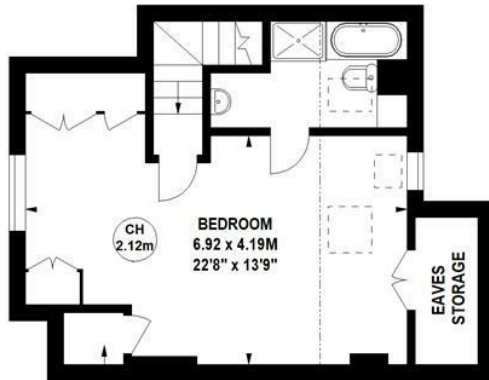
193.88 sq m / 2087 sq ft

(Including Eaves Storage)

Eaves Storage

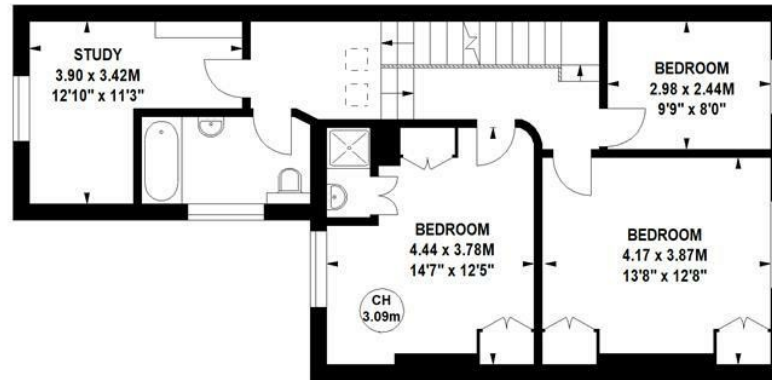
4.18 sq m / 45 sq ft

Key :
CH - Ceiling Height

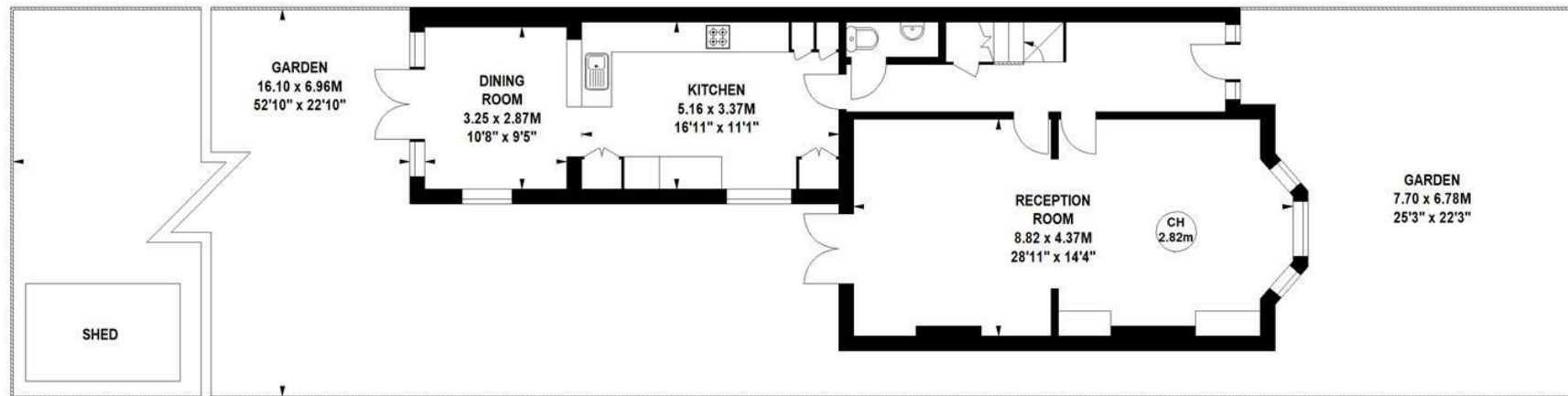


EAVES
STORAGE

Second Floor



First Floor



Ground Floor

Not to scale, for guidance only and must not be relied upon as a statement of fact.
All measurements and areas are approximate only

- Period semi-detached family home
- Five beds/three baths
- Excellent location close to High Road

- Large open aspect garden
- Spacious reception space
- Wide tree-lined street

Tenure - Freehold
Local Authority - Hounslow
Council Tax - Band G

