



Burnaby Gardens, London, W4 3DR

An exceptionally light and spacious five-bedroom semi-detached Victorian family house offers an excellent balance of living and entertaining space in this prestigious tree-lined residential road. Luxury master suite, four further double bedrooms, two further bathrooms, large entrance hall, 29' through reception room, 24' kitchen/breakfast room, utility room, cloakroom, cellar, private 32' west-facing landscaped garden, covered side access. Ideally situated within close proximity to local shops, bars, and restaurants, bus, rail, and tube networks, as well as excellent schooling facilities. No chain.

- Semi-detached Victorian family house
- Prestigious tree-lined residential road
- Five bedrooms/three bathrooms
- 32' West-facing landscaped garden
- Fantastic transport links
- No chain

Guide Price £1,750,000

Burnaby Gardens, W4

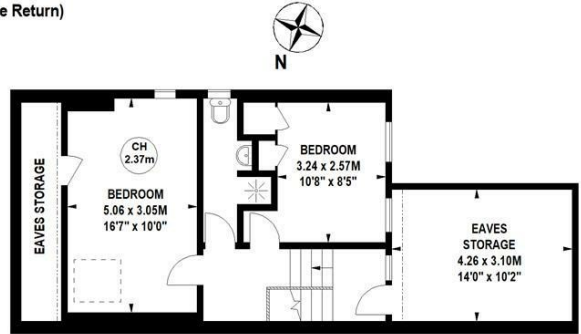
Approximate gross internal area
214.60 sq m / 2310 sq ft
 (Including Eaves Storage & Excluding Side Return)

Eaves Storage
 18.12 sq m / 195 sq ft
 Side Return
 10.68 sq m / 115 sq ft

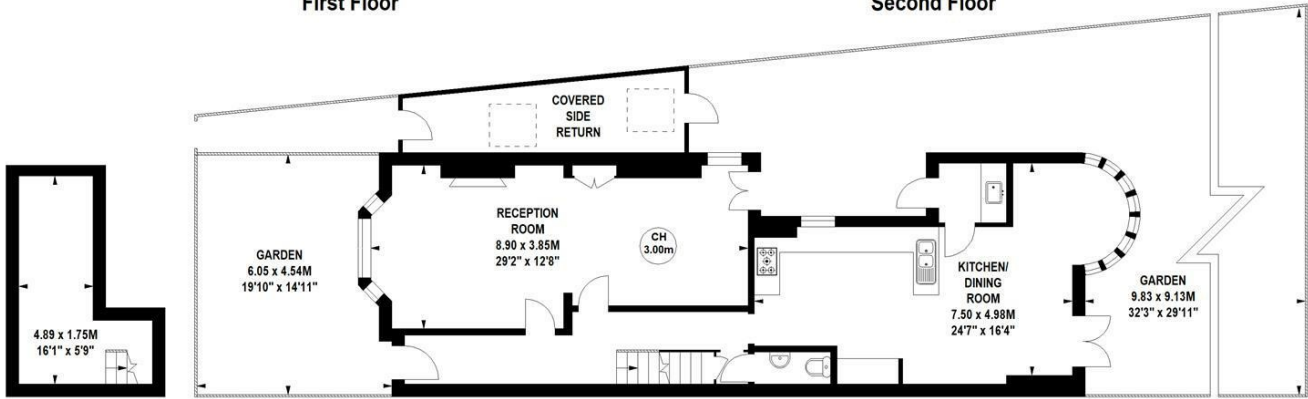
Key :
 CH - Ceiling Height



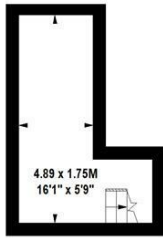
First Floor



Second Floor



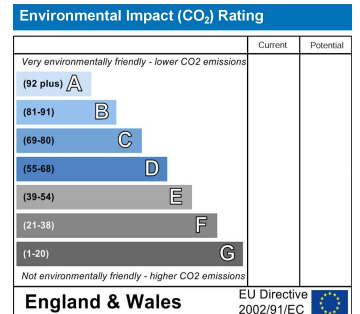
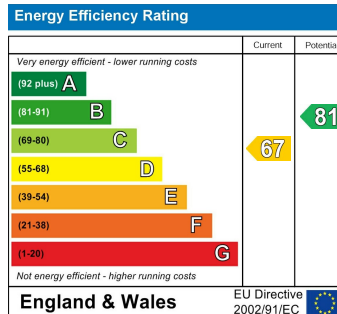
Ground Floor



Cellar

Not to scale, for guidance only and must not be relied upon as a statement of fact.
 All measurements and areas are approximate only

Tenure - Freehold
 Local Authority - Hounslow
 Council Tax - Band G



5-7 Turnham Green Terrace, Chiswick, London, W4 1RG

Tel 020 8747 8800

E-mail sales@whitmanandco.com

Website www.whitmanandco.com

PrimeLocation.com Zoopla.co.uk rightmove OnTheMarket.com

MISREPRESENTATION ACT 1967

Whitman & Co. for themselves and for the vendors give notice that these particulars do not constitute any part of, an offer of contract. All statements contained in these particulars are made without responsibility on the part of Whitman & Co. or the vendor. None of the statements contained in these particulars is to be relied upon as statements or representations of facts. Any intending purchaser must satisfy himself by inspection or otherwise as to the correctness of each of the statements contained in these particulars. The vendor does not make or give, and neither Whitman & Co. or any person in their employment has any authority to make or give, any representation or warranty whatever in relation to the property.