



## Valetta Road, London, W3 7TA

A beautifully presented two-bedroomed ground floor apartment with private courtyard garden situated within this popular residential area, local shopping is within a short walk whilst further afield the more extensive and boutique shopping and restaurant facilities of both Chiswick High Road and King Street. The accommodation provides: spacious open plan living space with galley style fully fitted kitchen, large bifold doors interconnecting living space into private patio garden with an awning to ensure privacy and ambience, large master bedroom with ensuite walk-in shower room, fitted wardrobes, door interconnecting into the courtyard at the rear, lovely family bathroom, further double bedroom, front garden with a raised wall for privacy, bin, bike storage and flower borders rear garden with brick built raised borders, mainly tiled with various mature shrubs pots and flowers. Local transport links include Stamford Brook & Turnham Green Tube stations, numerous local bus routes with convenient access via A4/M4 Central London, Heathrow, and The West. Ealing Council Band D. EPC-C. The property is available 22nd July and is offered unfurnished

- Immaculately presented
- Good for transport links
- Spacious open plan living area
- Fully fitted galley style kitchen
- Master bedroom with En-suite shower room
- Further bedroom
- Luxury bathroom
- Private courtyard rear garden
- Front garden with bin & Bike storage
- Available early/mid July unfurnished/flexible

**£2,400 Per Calendar Month**

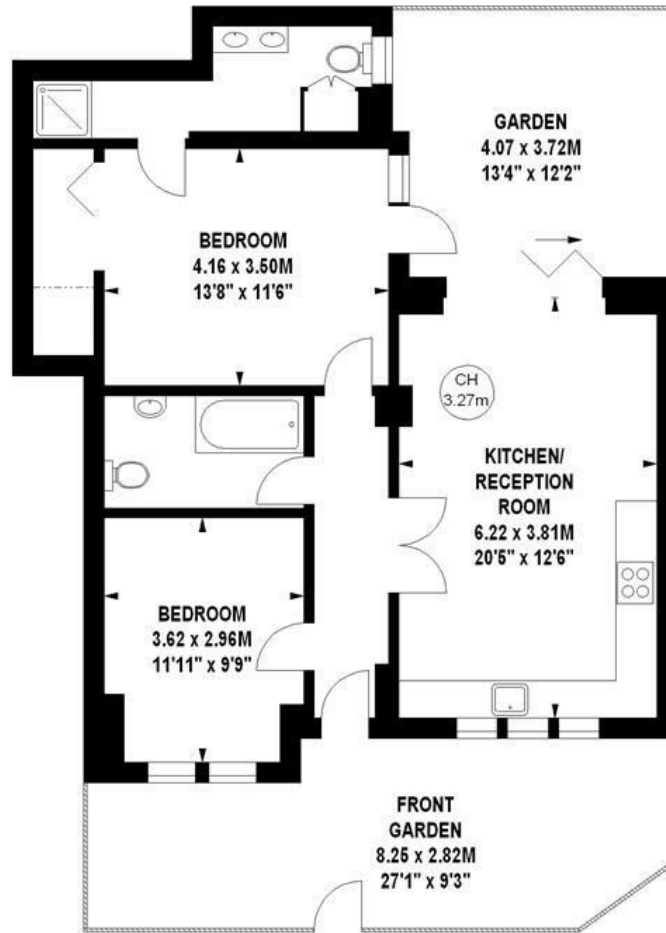
# Valetta Road, W3

Approximate gross internal area

70.88 sq m / 763 sq ft



Key :  
CH - Ceiling Height

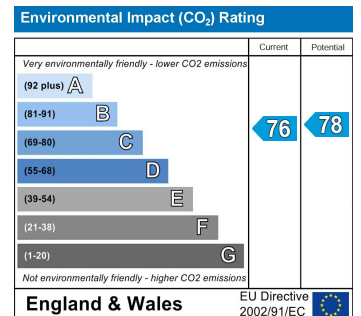
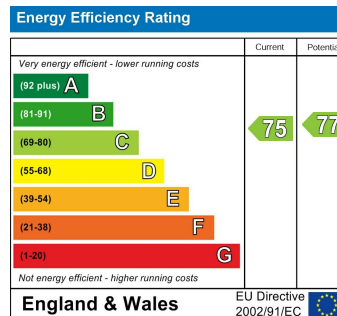


## Ground Floor

The floor plan is not to scale and measurements and areas shown are approximate and therefore should be used for illustrative purposes only. The plan has been prepared in accordance with the RICS code of Measuring Practice and whilst we have confidence in the information produced, it must not be relied on.

If there is any aspect of particular importance, you should carry out or commission your own inspection of the property.

Copyright of FeaturePRO.



5-7 Turnham Green Terrace, Chiswick, London, W4 1RG

Tel 020 8747 8800

E-mail [lettings@whitmanandco.com](mailto:lettings@whitmanandco.com)

Website [www.whitmanandco.com](http://www.whitmanandco.com)