



Heathfield Gardens, London, W4 4JY

Guide Price £1,750,000

WHITMAN & CO.

SALES · LETTINGS · COMMERCIAL

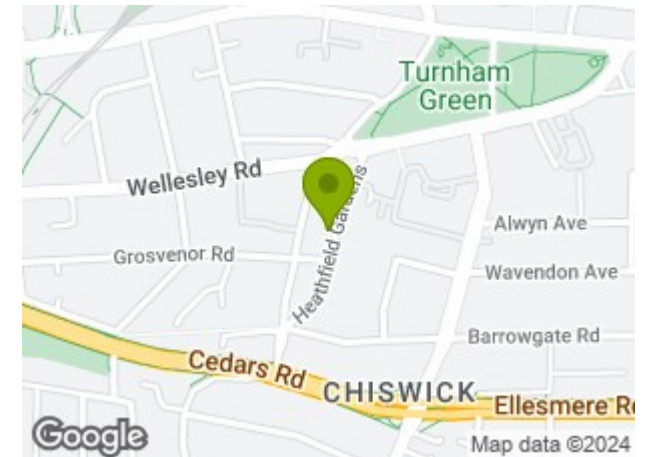
- Imposing natural three-storey period family home
- High ceilings, with light and spacious rooms
- West facing garden
- Totalling in excess of 2000 sqft
- Flexible reception space
- Close to numerous amenities

Tenure - Freehold
Local Authority - Hounslow
Council Tax - Band G

THE PROPERTY

An imposing, natural three-storey period family home located on this wide tree-lined residential street running south off Turnham Green. The house is very well presented throughout and benefits from high ceilings and light and spacious rooms. The accommodation, totalling in excess of 2000 sqft comprises a front reception/dining room with bay window which leads through to a fully fitted kitchen, additional reception room with bifold doors onto a pretty west-facing garden, stunning full-width principle bedroom with fitted wardrobes, three further spacious double bedrooms, spacious family bathroom, second full bathroom, entrance hall with storage, cloakroom, cellar. The house is a short walk from Chiswick High Road's shops, cafes and restaurants and also close to the river and Chiswick House and Grounds. Transport links include Chiswick Park and Gunnersbury stations, local bus routes and the A4/M4 for routes in and out of London.

SITUATION

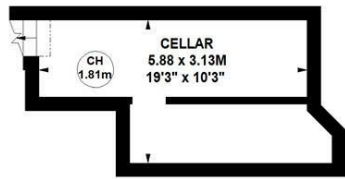
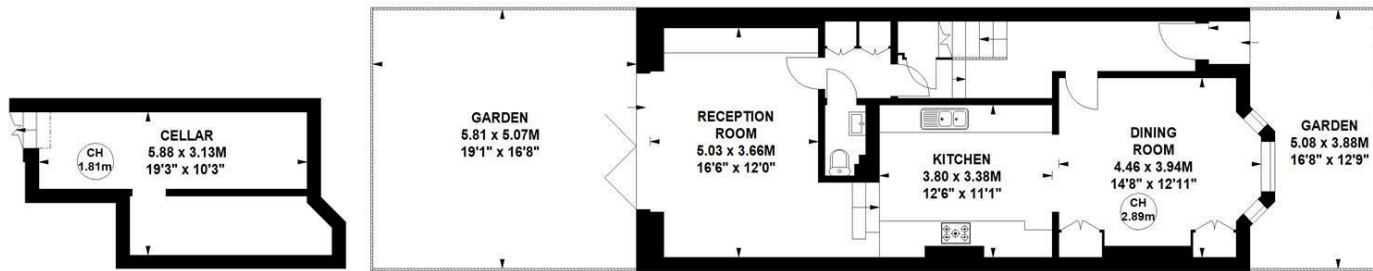
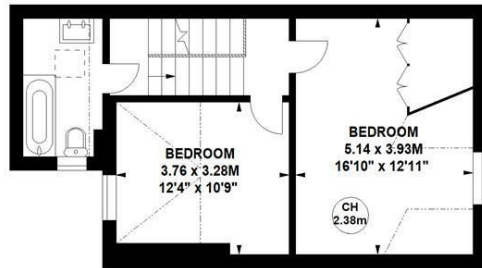


Heathfield Gardens, W4

Approximate gross internal area
186.64 sq m / 2009 sq ft



Key :
CH - Ceiling Height



Not to scale, for guidance only and must not be relied upon as a statement of fact.
All measurements and areas are approximate only