



Westcroft Square, London, W6 0TA

A newly renovated two double bedroom two bathroom split level maisonette situated in an ideal location in this historic square. Finished to an immaculate standard throughout, the accommodation comprises a 28'5" double reception room with hard wood flooring, fully fitted kitchen, master double bedroom with luxury shower room and private courtyard, additional double bedroom with fitted wardrobes and adjacent shower room, and separate utility room. Located just north of King Street offering close proximity to both Stamford Brook and Ravenscourt Park tube stations as well as the extensive shopping facilities. Hammersmith & Fulham Band E. EPC D. The property is offered as unfurnished and available now.

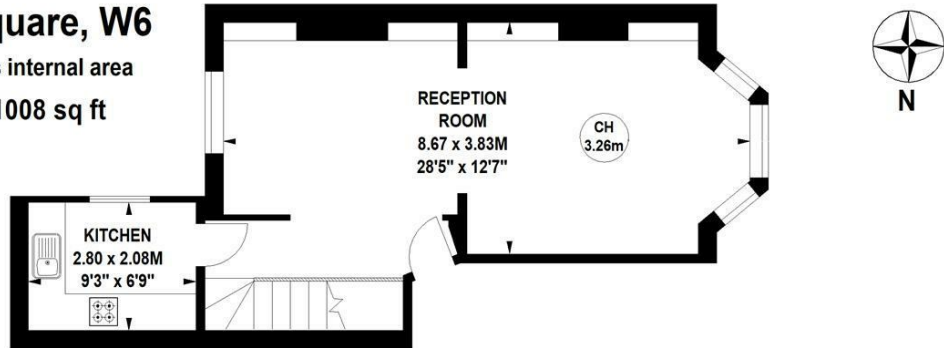
- Brand new renovation
- Immaculate condition throughout
- 28'5" reception room
- Separate utility room
- Close proximity to underground stations
- Two double bedrooms
- Two luxury bathrooms
- Sought after historic square
- Unfurnished
- Available now

£3,000 Per Calendar Month

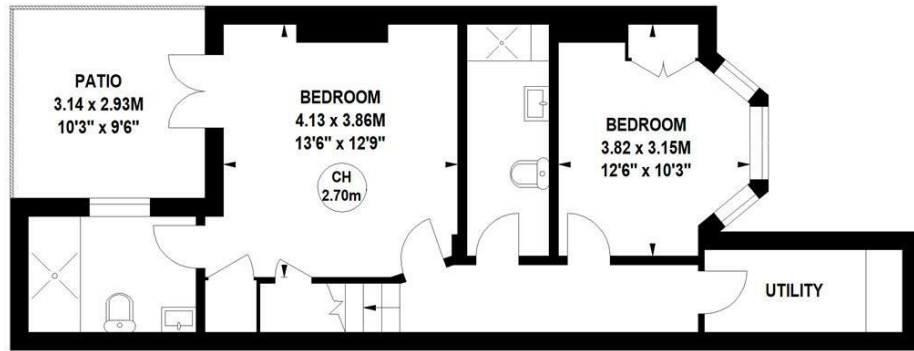
Westcroft Square, W6

Approximate gross internal area
93.64 sq m / 1008 sq ft

Key :
CH - Ceiling Height

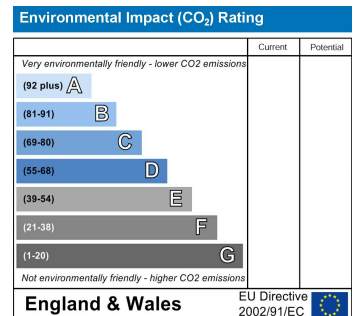
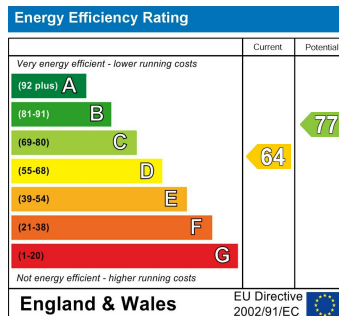


Ground Floor



Lower Ground Floor

Not to scale, for guidance only and must not be relied upon as a statement of fact.
All measurements and areas are approximate only



5-7 Turnham Green Terrace, Chiswick, London, W4 1RG
Tel 020 8747 8800

E-mail lettings@whitmanandco.com
Website www.whitmanandco.com