



Cornwall Grove, London, W4 2LB

£1,395,000

**WHITMAN & CO.**

SALES · LETTINGS · COMMERCIAL

- Four bedroom family house
- 25' Kitchen/breakfast room and 20' reception room
- Excellent balance of living and entertaining space
- Sought after location
- Excellent transport links
- Quiet residential road

Tenure - Freehold  
Local Authority - Hounslow  
Council Tax - Band F

## THE PROPERTY

An exceptionally light and spacious four-bedroom period family house offers an excellent balance of living and entertaining space in this centrally located, tree-lined residential road. The property comprises four bedrooms, two bathrooms, a 20' reception room, a 25' fully integrated kitchen/breakfast room, a cloakroom, and a private landscaped garden with polished hardwood floors. Ideally located within close proximity to Turnham Green Tube Station, local bus routes, and the extensive range of shops, bars, and restaurants on Chiswick High Road.

## Cornwall Grove, W4

Approximate gross internal area

154.40 sq m / 1662 sq ft  
(Including Eaves Storage)

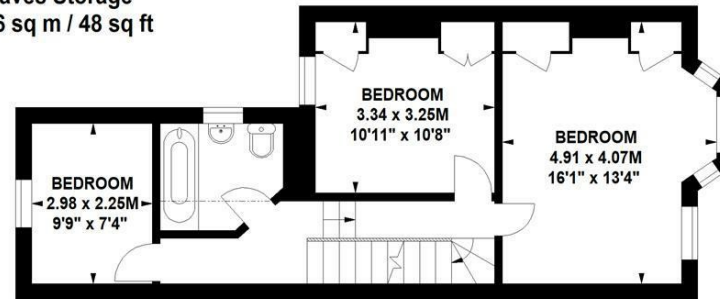
Eaves Storage  
4.46 sq m / 48 sq ft



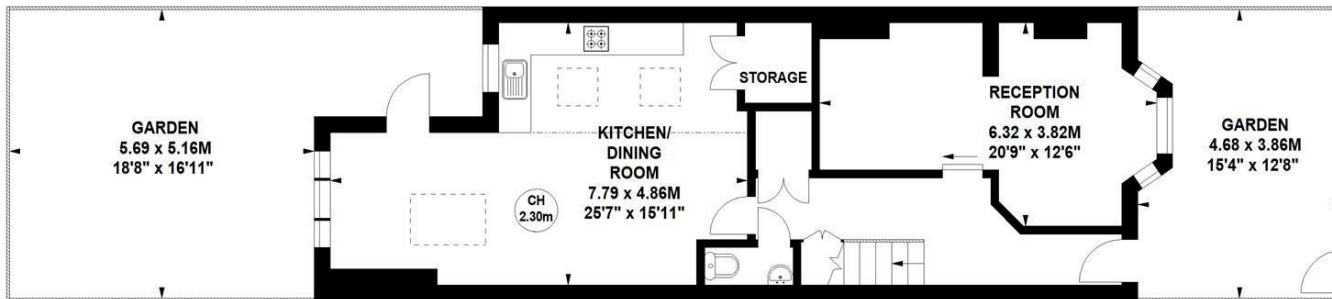
Key :  
CH - Ceiling Height



Second Floor



First Floor



Ground Floor

Not to scale, for guidance only and must not be relied upon as a statement of fact.  
All measurements and areas are approximate only

## SITUATION



5-7 Turnham Green Terrace, Chiswick, London, W4 1RG

Tel 020 8747 8800

E-mail [sales@whitmanandco.com](mailto:sales@whitmanandco.com)

Website [www.whitmanandco.com](http://www.whitmanandco.com)