

Fletcher Road, London, W4 5AT

£750,000

**WHITMAN & CO.**

SALES · LETTINGS · COMMERCIAL

- 1000sqft Split-level apartment
- Full width kitchen/reception room
- Close to a number of transport links
- Private 20' roof terrace
- Three beds/two baths
- Built-in and eaves storage

Tenure - Leasehold with share of freehold  
 Lease length - 996 years  
 Ground rent - Peppercorn  
 Maintenance costs - £358 pa  
 Local authority - Ealing  
 Council tax - Band E

## THE PROPERTY

A spacious and light three bed/two bath maisonette with private roof terrace and approximately 1000sqft of accommodation located on this residential street close to shops and transport. The split-level flat comprises a full-width kitchen/reception room with bay window, three good size bedrooms, bathroom, shower room, sunny 20ft roof terrace, built-in storage, eaves storage, and share in the freehold. Fletcher Road is within a short walk of South Acton (Overground) and Chiswick Park and Acton Town (tube) stations, local bus routes and offers quick access to the A4/M4 and A40/M40 for routes in and out of London. Chiswick High Road and Acton High Street's shops, cafes and restaurants are also close by.

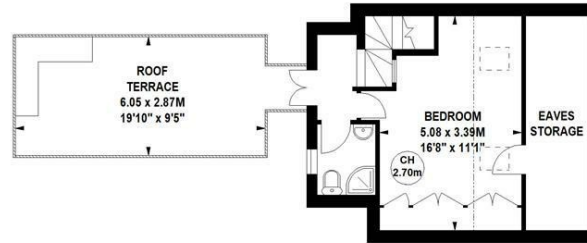
### Fletcher Road, W4

Approximate gross internal area

93.09 sq m / 1002 sq ft  
 (Including Eaves Storage)

Eaves Storage  
 7.71 sq m / 83 sq ft

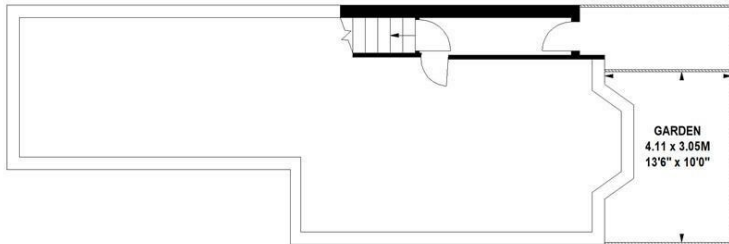
Key :  
 CH - Ceiling Height



Second Floor



First Floor



Ground Floor  
 Entrance

Not to scale, for guidance only and must not be relied upon as a statement of fact.  
 All measurements and areas are approximate only

## SITUATION



5-7 Turnham Green Terrace, Chiswick, London, W4 1RG

Tel 020 8747 8800

E-mail [sales@whitmanandco.com](mailto:sales@whitmanandco.com)

Website [www.whitmanandco.com](http://www.whitmanandco.com)

