



Weston Road, London, W4 5NJ

£599,950

WHITMAN & CO.

SALES · LETTINGS · COMMERCIAL

- Sought after location
- Fantastic transport links
- Tree-lined residential road
- Two double bedrooms
- Excellent order throughout
- Polished hardwood floors

Tenure - Leasehold
 Lease length - 106 Years remaining
 Ground Rent - £250 pa
 Service Charge - £300 pa
 Local authority - Ealing
 Council tax - Band D

THE PROPERTY

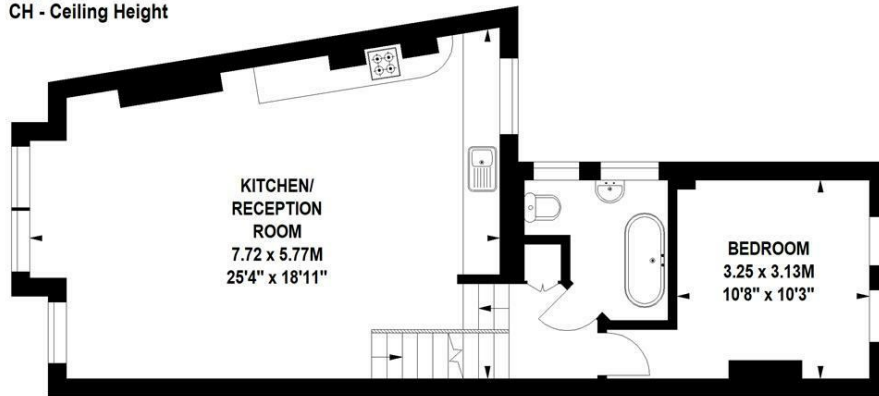
An exceptionally bright two-bedroom period maisonette ideally located in this sought-after residential area, offering close proximity to numerous amenities. The property comprises a master bedroom with ensuite, a second double bedroom, a luxury bathroom, and a spacious 25' reception room. Additionally, it features a fully integrated kitchen, polished hardwood floors, and is in excellent condition throughout. Situated on a tree-lined residential street, it offers easy access to train, tube, and bus facilities, as well as the diverse shops, bars, and restaurants on Chiswick High Road.

Weston Road, W4

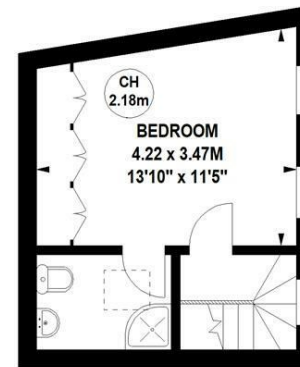
Approximate gross internal area

79.89 sq m / 860 sq ft

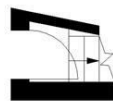
Key :
 CH - Ceiling Height



First Floor



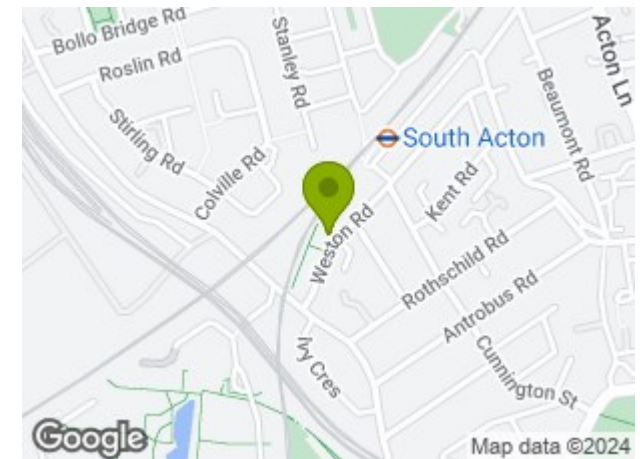
Second Floor



Ground Floor
 Entrance

Not to scale, for guidance only and must not be relied upon as a statement of fact.
 All measurements and areas are approximate only

SITUATION



5-7 Turnham Green Terrace, Chiswick, London, W4 1RG

Tel 020 8747 8800

E-mail sales@whitmanandco.com

Website www.whitmanandco.com