



Flanders Road, London, W4 1NF

Guide Price £1,000,000

WHITMAN & CO.

SALES · LETTINGS · COMMERCIAL

- Sought after location
- Bedford Park area
- Fantastic transport links
- Full of potential
- 27' South-facing garden
- Three double bedrooms

Tenure - Freehold
Local Authority - Hounslow
Council tax - Band E

THE PROPERTY

An unmodernised, three-bedroom terraced period house ideally located in the Bedford Park area, offering close proximity to numerous amenities. The property features three bedrooms, a loft, a large entrance hall, a double reception room, an 18' kitchen/breakfast room, rear lean-to, and a private 27' South-facing garden with rear access. Ideally situated within a minute's walk of Turnham Green Station and the extensive range of shops, bars, and restaurants on Chiswick High Road. No chain.



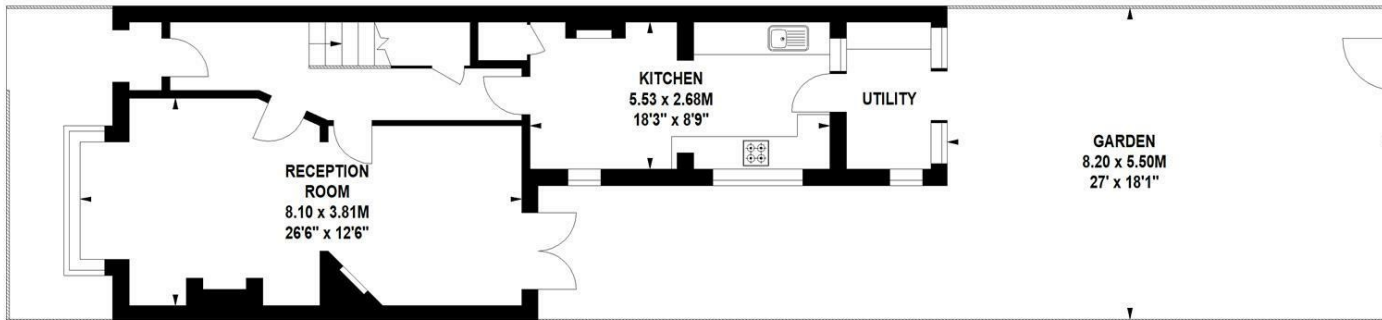
First Floor

Flanders Road, W4

Approximate gross internal area
111.29 sq m / 1198 sq ft



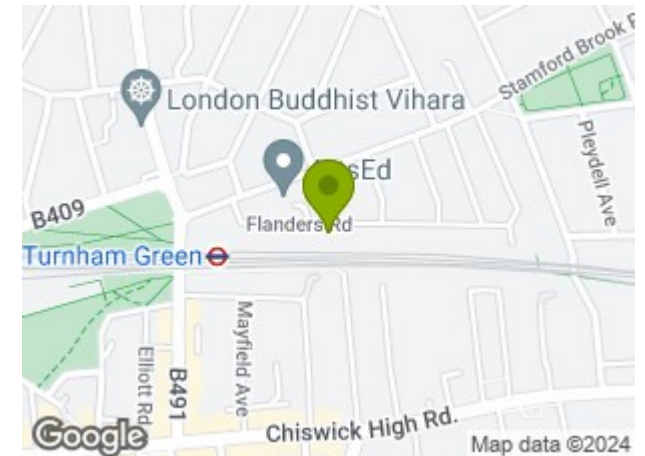
Key :
CH - Ceiling Height



Ground Floor

Not to scale, for guidance only and must not be relied upon as a statement of fact.
All measurements and areas are approximate only

SITUATION



5-7 Turnham Green Terrace, Chiswick, London, W4 1RG

Tel 020 8747 8800

E-mail sales@whitmanandco.com

Website www.whitmanandco.com