



Hadley Gardens, London, W4 4NX

Guide Price £2,750,000

WHITMAN & CO.

SALES · LETTINGS · COMMERCIAL

- Six double bedrooms
- 44' Landscaped garden
- Imposing entrance hall
- Semi-detached period house
- Sought after location
- Fantastic transport links

Tenure - Freehold
Local Authority - Hounslow
Council Tax - Band G

THE PROPERTY

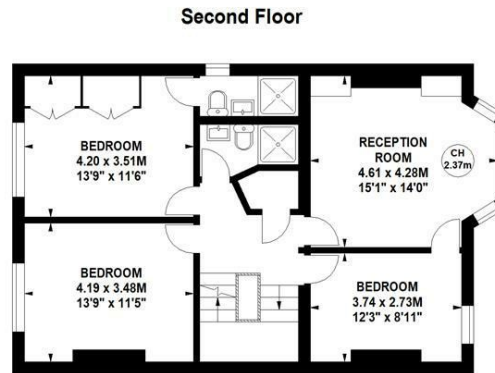
A spacious six-bedroom semi-detached period house offers an excellent balance of living and entertaining space in this prestigious tree-lined residential road, close to numerous amenities. The property features a master suite, four/five further bedrooms, two additional shower rooms, a large entrance hall, two reception rooms, a 22' fully fitted kitchen/breakfast room, a utility room, a cloakroom, and a private 44' landscaped garden with covered side access. Ideally located within close proximity to Turnham Green tube station and the extensive range of shops, bars, and restaurants on Chiswick High Road.

Hadley Gardens, W4

Approximate gross internal area
231.32 sq m / 2490 sq ft
(Including Eaves Storage & Excluding Store)
Eaves Storage
14.12 sq m / 152 sq ft
Store
5.95 sq m / 64 sq ft



Key :
CH - Ceiling Height



Not to scale, for guidance only and must not be relied upon as a statement of fact.
All measurements and areas are approximate only

SITUATION



5-7 Turnham Green Terrace, Chiswick, London, W4 1RG

Tel 020 8747 8800

E-mail sales@whitmanandco.com

Website www.whitmanandco.com



MISREPRESENTATION ACT 1967

Whitman & Co. for themselves and for the vendors give notice that these particulars do not constitute any part of, an offer of contract. All statements contained in these particulars are made without responsibility on the part of Whitman & Co. or the vendor. None of the statements contained in these particulars is to be relied upon as statements or representations of facts. Any intending purchaser must satisfy himself by inspection or otherwise as to the correctness of each of the statements contained in these particulars. The vendor does not make or give, and neither Whitman & Co. or any person in their employment has any authority to make or give, any representation or warranty whatever in relation to the property.