



Waldeck Road, London, W4  
£1,295,000

**WHITMAN & CO.**  
SALES · LETTINGS · COMMERCIAL



A truly stunning period house, designed by award-winning architects William Tozer, located in the sought after Strand on the Green area of Chiswick. The house has been meticulously refurbished to a very high standard and incorporates a number of clever design features which make this house stand out as one of the very best we've seen in the area. The accommodation comprises a full-width reception room with wide panel oak floors, an impressive kitchen/dining room which is flooded with light, private south facing garden and additional courtyard, a garden studio, four bedrooms with fitted wardrobes, two brand new luxury bathrooms, a cloakroom and eaves storage. Waldeck Road is a quiet residential street moments from Strand on the Green's historic riverside and within a short walk of Kew Gardens and Chiswick High Road's shops, cafes and restaurants. The house is also within the catchment area of Strand on the Green school. Transport links include Kew Bridge (mainline) and Gunnersbury (tube and overground) stations, local bus routes and the A4/M4 for routes in and out of London.



# Waldeck Road, W4

Approximate gross internal area

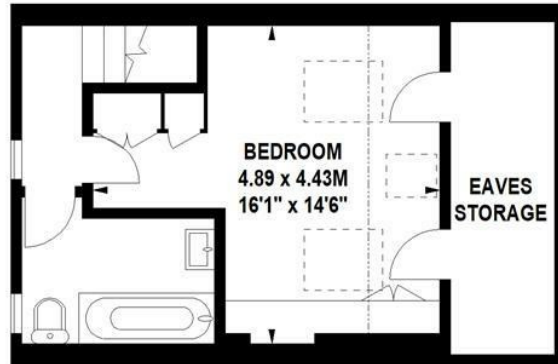
145.39 sq m / 1565 sq ft  
(Including Eaves Storage)

Eaves Storage

6.78 sq m / 73 sq ft



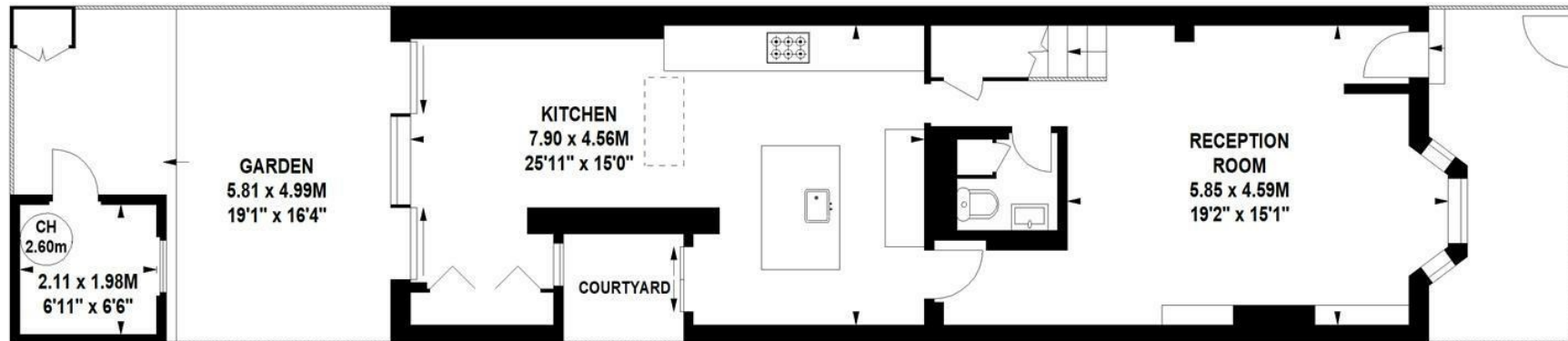
Key :  
CH - Ceiling Height



Second Floor



First Floor



Ground Floor

Not to scale, for guidance only and must not be relied upon as a statement of fact.  
All measurements and areas are approximate only

- Designed by award winning architect Willaim Tozer
- Bespoke kitchen/dining room
- Four beds/two baths

- Stunning full width reception room
- South facing garden with garden studio
- Sought after residential area

Tenure - Freehold  
Local Authority - Hounslow  
Council Tax - Band F

