



Chiswick Quay, London, W4 3UR

Guide Price £1,750,000

WHITMAN & CO.

SALES · LETTINGS · COMMERCIAL

- Stunning riverside properties
- Five bedroom townhouse
- 32' Integral garage and off-street parking
- Secluded roof terrace
- South facing landscaped garden
- Home gym

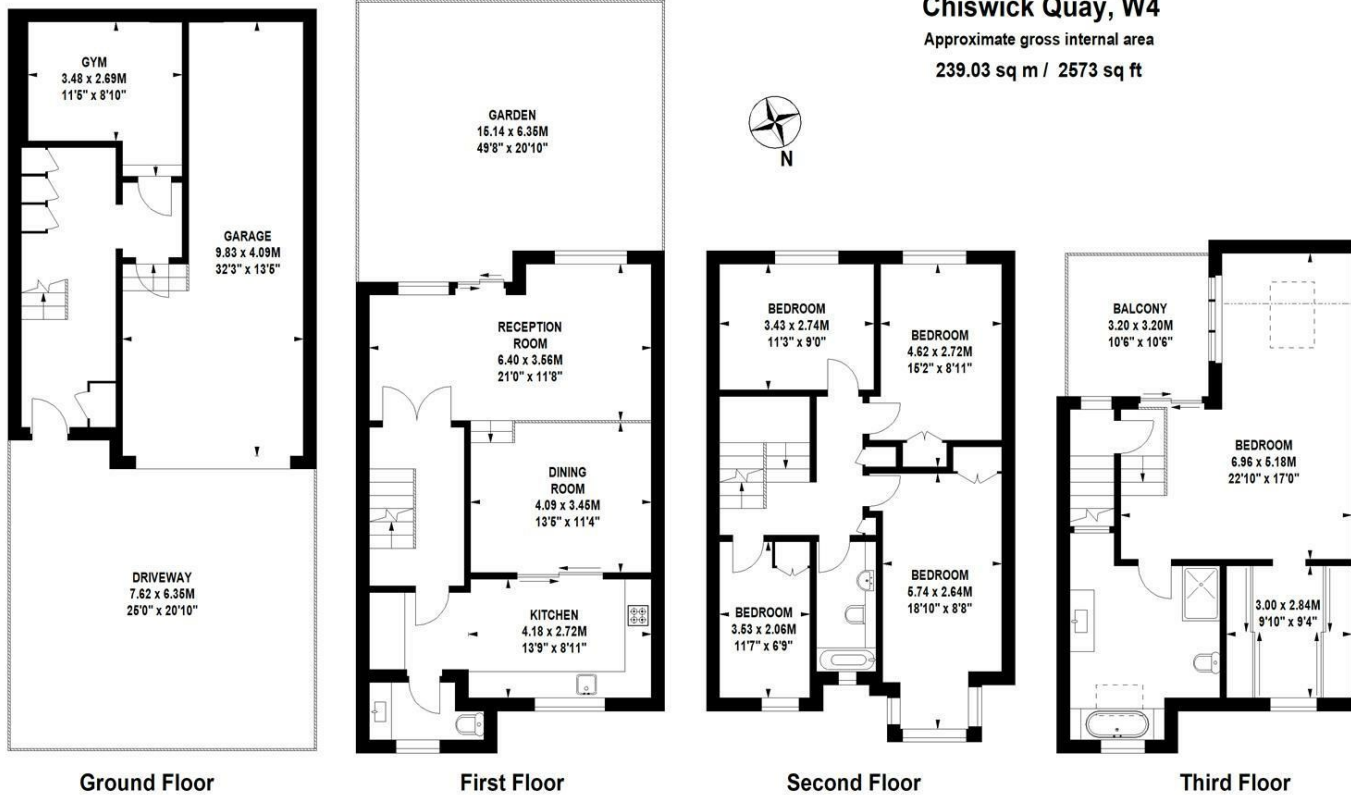
Tenure - Freehold
Local Authority - Hounslow
Council tax - Band G

THE PROPERTY

Set within this exclusive marina riverside development, we are delighted to offer this five-bedroom townhouse with direct river views from all principal rooms. The property features a principal suite with a secluded roof terrace, four further bedrooms, a family bathroom, a 21' reception room leading onto a south-facing landscaped garden, a fully integrated kitchen, an open-plan dining area, a cloakroom, a gym, a 32' integral garage, and off-street parking. Ideally located next to Dukes Playing Fields, Chiswick House, and local shops and pubs. Transport links include Chiswick (mainline) station, local bus routes, and the A4/M4 into and out of town. No chain.

Chiswick Quay, W4

Approximate gross internal area
239.03 sq m / 2573 sq ft



Not to scale, for guidance only and must not be relied upon as a statement of fact.
All measurements and areas are approximate only

SITUATION



5-7 Turnham Green Terrace, Chiswick, London, W4 1RG

Tel 020 8747 8800

E-mail sales@whitmanandco.com

Website www.whitmanandco.com

