



Chiswick High Road, London, W4 5RL

Guide Price £450,000

WHITMAN & CO.

SALES · LETTINGS · COMMERCIAL

- Exclusive block
- Automatic lift
- Sought after location

- 17' South facing roof terrace
- Underfloor heating
- Video entryphone

Tenure - Leasehold
 Lease Length - 118 years remaining
 Ground Rent - £450 pa
 Service Charge - £1850 pa
 Local Authority - Hounslow
 Council Tax - Band D

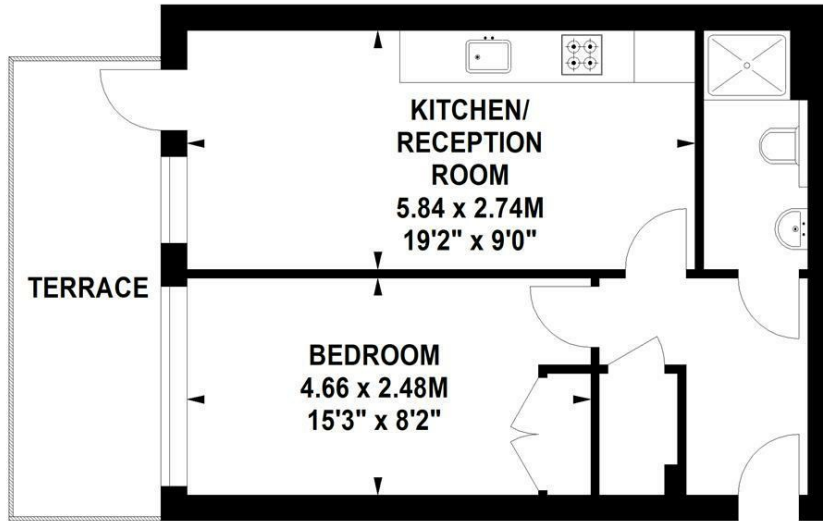
THE PROPERTY

An immaculately presented apartment set within this exclusive block with the added benefit of a south-facing terrace. Comprising a double bedroom, luxury shower room, 19' reception room, fully integrated kitchen, 17' south-facing roof terrace, underfloor heating, automatic lift, video entry phone, long lease. Ideally located in the hub of Chiswick, offering close proximity to numerous amenities.

Chiswick High Road, W4

Approximate gross internal area

38.00 sq m / 409 sq ft



Third Floor

Not to scale, for guidance only and must not be relied upon as a statement of fact.
 All measurements and areas are approximate only

SITUATION



5-7 Turnham Green Terrace, Chiswick, London, W4 1RG

Tel 020 8747 8800

E-mail sales@whitmanandco.com

Website www.whitmanandco.com

