

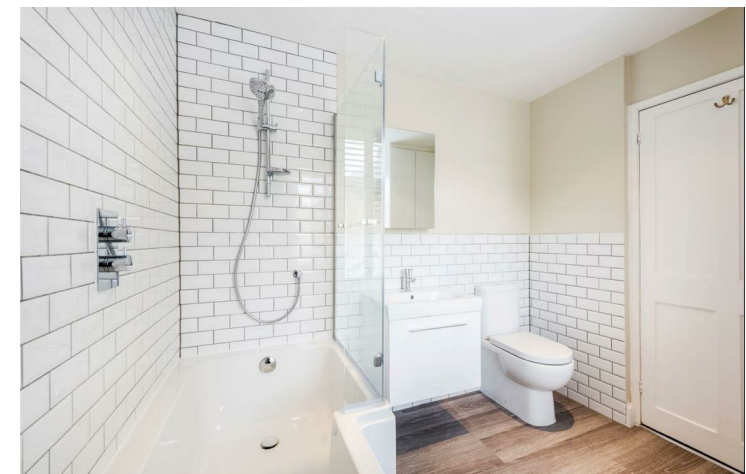


Windmill Road, London, W4
Guide Price £1,250,000

WHITMAN & CO.

SALES · LETTINGS · COMMERCIAL

A spacious end-of-terrace period property house with commanding views across Chiswick Common and close proximity to all amenities. Three bedrooms, ensuite bathroom, and separate shower room, 24' through reception room, 16' fully fitted kitchen, gas-fired central heating, private courtyard garden. Ideally situated within close proximity to Turnham Green tube station and the extensive shopping and restaurant facilities on Chiswick High Road. No chain.



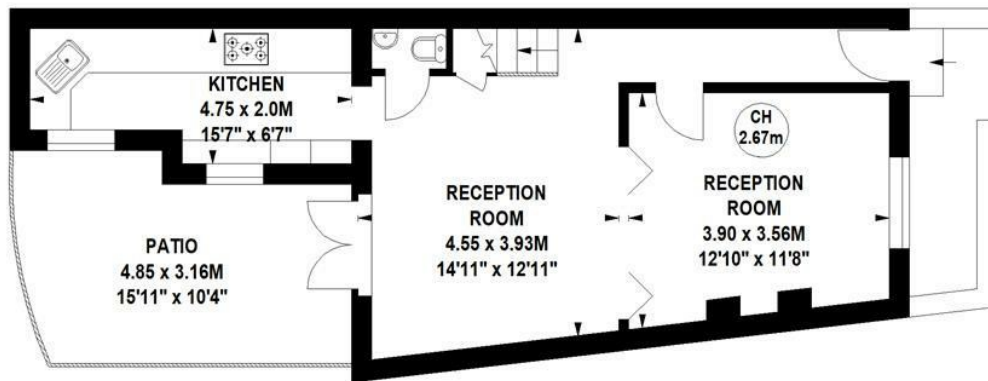
Windmill Road, W4

Approximate gross internal area
120.11 sq m / 1293 sq ft
(Including Eaves Storage)
Eaves Storage
3.80 sq m / 41 sq ft

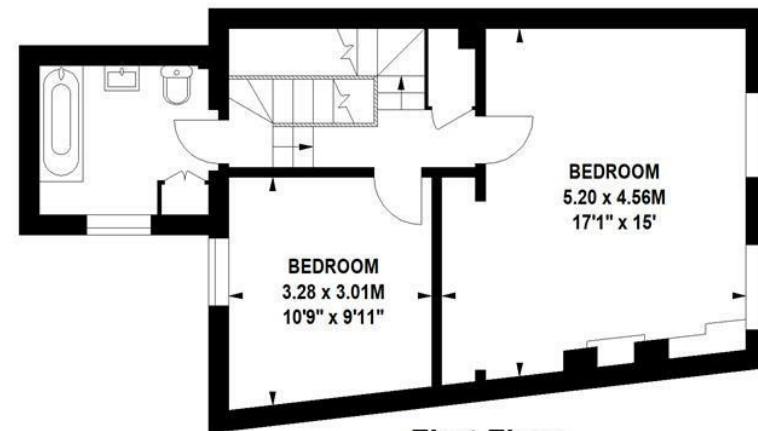


Second Floor

Key :
CH - Ceiling Height



Ground Floor



First Floor

Not to scale, for guidance only and must not be relied upon as a statement of fact.
All measurements and areas are approximate only

- Commanding views of Chiswick Common
- Private courtyard garden
- No chain

- End of terrace period house
- Three double bedrooms
- Fantastic transport links

Tenure - Freehold
Local Authority - Hounslow
Council tax - Band F

