



Kingswood Road, Chiswick, W4 5ET

£725,000

WHITMAN & CO.

SALES · LETTINGS · COMMERCIAL

- Bright and spacious period conversion
- Full width ground floor extension
- Bathroom with separate shower
- Private landscaped garden
- Two double bedrooms with fitted wardrobes
- Excellent location close to numerous amenities

Tenure - Leasehold with share of freehold
 Lease length - 995 Years remaining
 Ground Rent - Peppercorn
 Service Charge - 50% as and when
 Local Authority - Ealing
 Council Tax - Band D

THE PROPERTY

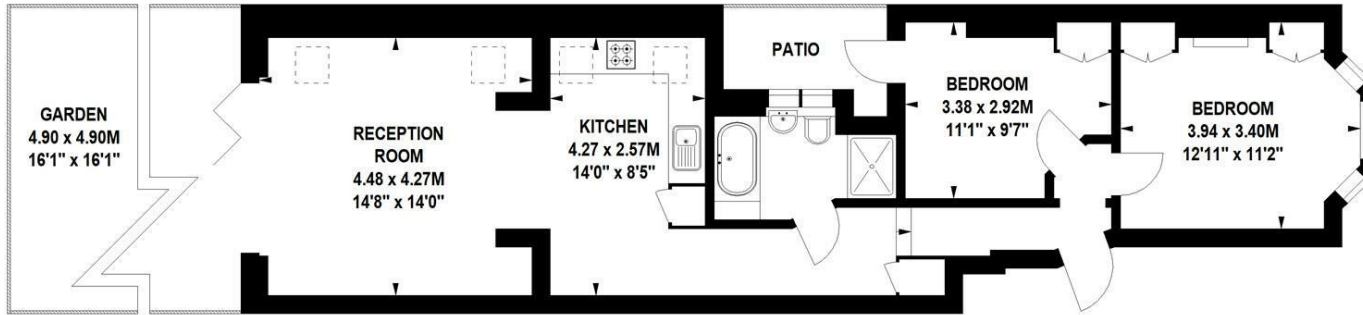
An immaculately presented two-bedroom period conversion flat with a full-width ground floor extension and a private landscaped garden located in this sought-after residential area. The accommodation comprises a spacious double bedroom with a bay window and fitted wardrobes, a second double bedroom with fitted wardrobe and door onto a private patio, a luxury bathroom with bath and separate shower, a fully integrated kitchen/breakfast room which opens onto an exceptionally light reception room with bi-fold doors onto the private landscaped garden with rear access. The flat benefits from a 995-year lease and a share in the freehold. Ideally situated in this popular residential road just a short walk from Chiswick High Road's shops, bars, cafes and restaurants. Transport links include Chiswick Park, Turnham Green and South Acton stations, local bus routes and the A4/M4 for routes in and out of London.

Kingswood Road, W4

Approximate gross internal area

66.52 sq m / 716 sq ft

Key :
 CH - Ceiling Height



Ground Floor

Not to scale, for guidance only and must not be relied upon as a statement of fact.
 All measurements and areas are approximate only

SITUATION



5-7 Turnham Green Terrace, Chiswick, London, W4 1RG

Tel 020 8747 8800

E-mail sales@whitmanandco.com

Website www.whitmanandco.com

