



Chiswick Staithe, London, W4 3TP

Rare to the market, this award-winning four-bedroom townhouse boasts direct river frontage and offers commanding views from all principal rooms. It must be viewed to be fully appreciated. Arranged over four floors with flexible living space, the property features four bedrooms, two bathrooms, a 22'10" first-floor living room with a balcony and river views, a fully integrated kitchen/breakfast room, a utility/cloakroom, a garden summer room, an integral garage, and off-street parking. Additionally, it boasts a magnificent 65' south-west facing riverside garden and access to communal riverside gardens. Chiswick Staithe is conveniently located near Dukes Meadows playing fields, Chiswick House and Grounds, and local shops and pubs. Convenient transport links include Chiswick mainline station (a 10-minute walk), local bus routes, and the A4/M4 for easy access to routes in and out of London. Hounslow Council Tax Band G. EPC-D. The property is offered as part furnished and available now.

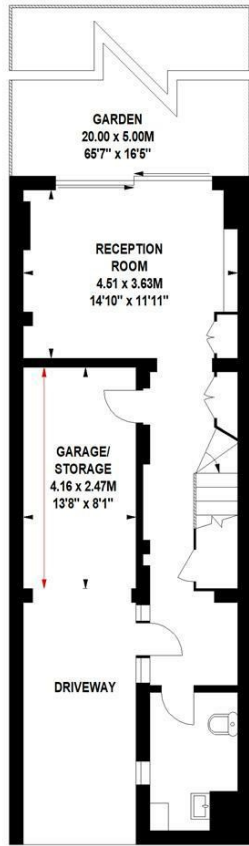
- River fronted property
- 65' South-west facing riverside garden
- Award-winning townhouse
- Sought after location
- Off-street parking and garage
- Part furnished
- Available now

£6,000 Per Calendar Month

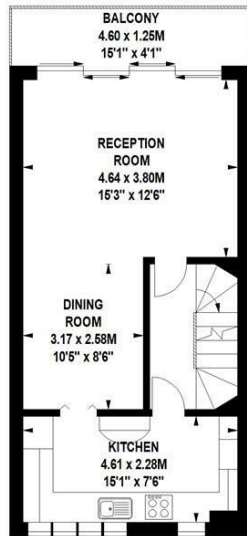
Chiswick Staithe, W4

Approximate gross internal area

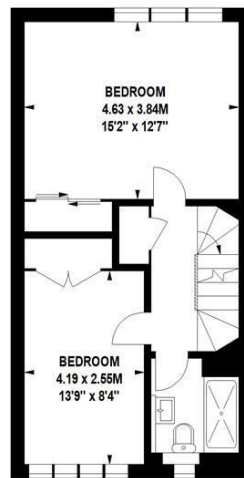
185.89 sq m / 2001 sq ft



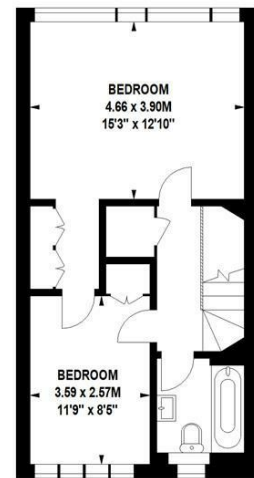
Ground Floor



First Floor

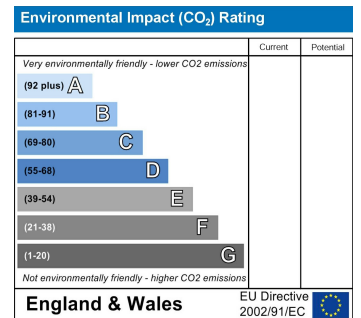
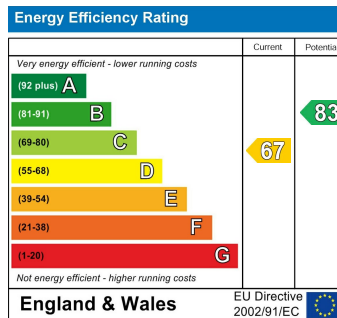


Second Floor



Third Floor

Not to scale, for guidance only and must not be relied upon as a statement of fact.
All measurements and areas are approximate only



5-7 Turnham Green Terrace, Chiswick, London, W4 1RG

Tel 020 8747 8800

E-mail sales@whitmanandco.com

Website www.whitmanandco.com



MISREPRESENTATION ACT 1967

Whitman & Co. for themselves and for the vendors give notice that these particulars do not constitute any part of, an offer of contract. All statements contained in these particulars are made without responsibility on the part of Whitman & Co. or the vendor. None of the statements contained in these particulars is to be relied upon as statements or representations of facts. Any intending purchaser must satisfy himself by inspection or otherwise as to the correctness of each of the statements contained in these particulars. The vendor does not make or give, and neither Whitman & Co. or any person in their employment has any authority to make or give, any representation or warranty whatever in relation to the property.