



Park Road, London, W4 3EX

Guide Price £1,750,000

WHITMAN & CO.

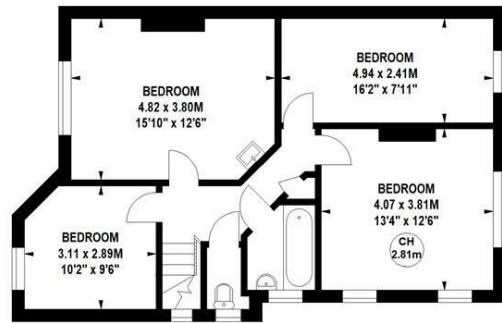
SALES · LETTINGS · COMMERCIAL

- Premier residential road
- Off street parking for 3 cars
- Close to Chiswick station
- Huge plot with 11m frontage
- Potential to extend STPP
- Fabulous mature garden

Tenure - Freehold
Local Authority - Hounslow
Council Tax - Band G

THE PROPERTY

A rare opportunity to purchase a period family home on a substantial plot located on this sought-after tree-lined residential road in the Grove Park area of Chiswick. With an 11m frontage with parking for at least 3 cars and a huge rear garden, the house offers significant potential to extend and remodel subject to the necessary consents. The accommodation comprises a 17' reception room with bay window, a second reception room, a fitted kitchen, a spacious entrance hall, four bedrooms, a bathroom with separate WC, an integral garage and a large loft. There are several options for remodelling and extending including side and rear extensions, loft conversion and conversion of the garage. Park Road is one of Chiswick's premier roads with the house being conveniently located for Chiswick station (a 2-minute walk), Chiswick House and Grounds, The River and a number of local shops, cafes and restaurants. No chain.

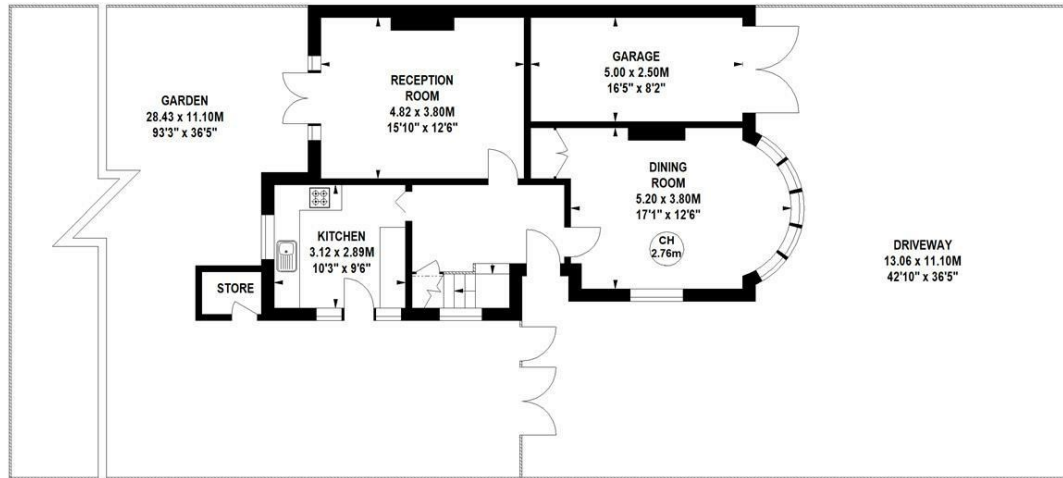


Park Road, W4

Approximate gross internal area
140.65 sq m / 1514 sq ft
(Including Garage & Store)
Garage
12.26 sq m / 132 sq ft
Store
1.39 sq m / 15 sq ft

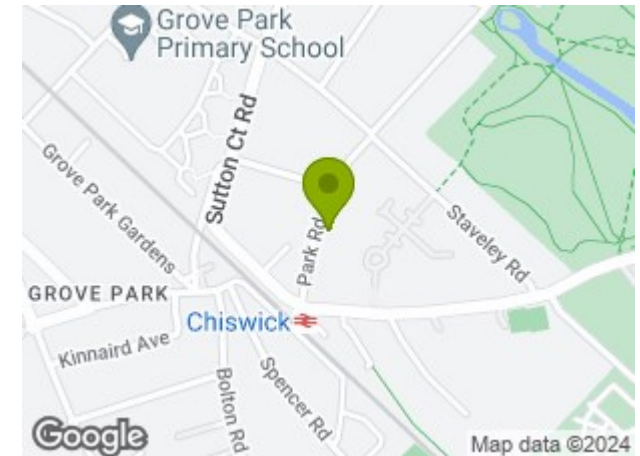


Key :
CH - Ceiling Height



Not to scale, for guidance only and must not be relied upon as a statement of fact.
All measurements and areas are approximate only

SITUATION



5-7 Turnham Green Terrace, Chiswick, London, W4 1RG

Tel 020 8747 8800

E-mail sales@whitmanandco.com

Website www.whitmanandco.com



MISREPRESENTATION ACT 1967

Whitman & Co. for themselves and for the vendors give notice that these particulars do not constitute any part of, an offer of contract. All statements contained in these particulars are made without responsibility on the part of Whitman & Co. or the vendor. None of the statements contained in these particulars is to be relied upon as statements or representations of facts. Any intending purchaser must satisfy himself by inspection or otherwise as to the correctness of each of the statements contained in these particulars. The vendor does not make or give, and neither Whitman & Co. or any person in their employment has any authority to make or give, any representation or warranty whatever in relation to the property.