



## Eyot Gardens, Hammersmith, W6 9TN

A delightful two bedroomed apartment with a private patio/terrace situated within a stone's throw of the River Thames along this much sought after area of Chiswick mall with its historic riverside walks and eating houses found on the Towpath between Chiswick & Hammersmith, local shopping is close to hand whilst further afield the more extensive facilities of Chiswick's main High Road including main retailers M&S, Waitrose, Sainsbury & Tesco. The accommodation provides: Open plan living area with galley style kitchen with overhead glazing, two double bedrooms with fitted wardrobes, shower room, central private terrace, gas fired central heating. Local transport links include Stamford Brook tube station(District Line) numerous local bus routes with easy access via A4/M4 Central London, Heathrow & The West. EPC-D. Hammersmith & Fulham Council Band D. Unfurnished. Available 22nd April

- Lovely Chiswick Mall location
- Good for transport links
- Stones throw to the river
- Period ground floor conversion
- Open plan living area
- Galley style kitchen
- Two double bedrooms
- Shower room
- Private Patio/Terrace
- Available 22nd April Offered unfurnished

**£1,950 Per Calendar Month**

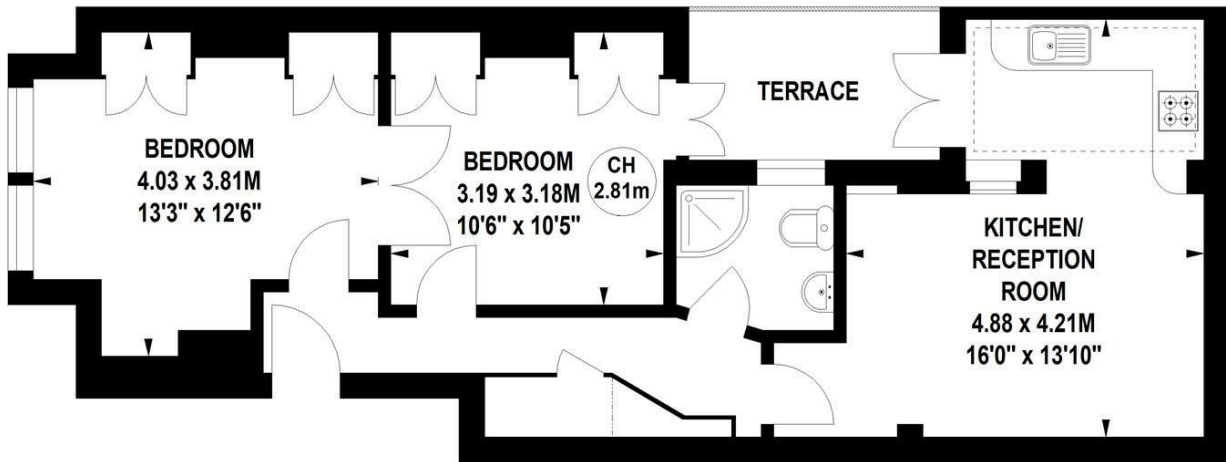
# Eyot Gardens, W6

Approximate gross internal area

53.70 sq m / 578 sq ft

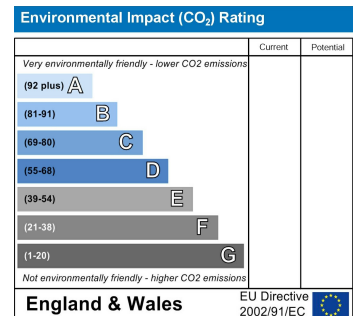
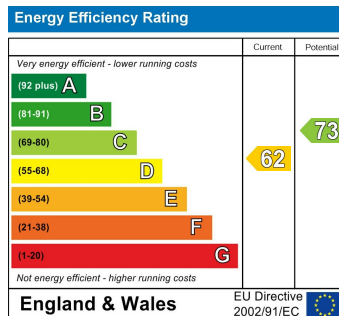


Key :  
CH - Ceiling Height



## Ground Floor

Not to scale, for guidance only and must not be relied upon as a statement of fact.  
All measurements and areas are approximate only



5-7 Turnham Green Terrace, Chiswick, London, W4 1RG

Tel 020 8747 8800

E-mail [lettings@whitmanandco.com](mailto:lettings@whitmanandco.com)

Website [www.whitmanandco.com](http://www.whitmanandco.com)