



Glebe Street, London, W4 2BE

Guide Price £1,695,000

WHITMAN & CO.

SALES · LETTINGS · COMMERCIAL

- In the heart of the Glebe Estate
- Highly sought after location
- Fantastic transport links
- Meticulously designed and refurbished
- Flooded with natural light
- Boutique hotel-style master suite

Tenure - Freehold
Local Authority - Hounslow
Council Tax - Band F

THE PROPERTY

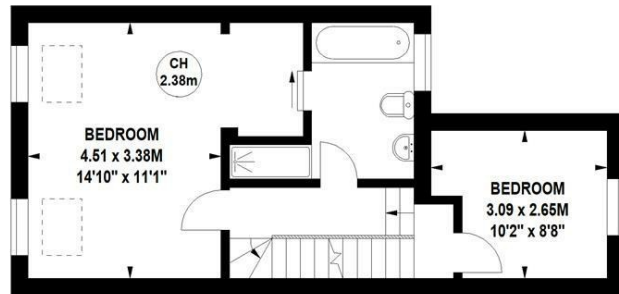
A stunning four-bedroom period home, meticulously designed and refurbished, located in the heart of Chiswick's Glebe Estate, one of the most sought-after residential neighbourhoods in London. It offers a luxury boutique hotel-style master suite, three further double bedrooms, a contemporary family bathroom, a double reception room with bay window, an 18' bespoke kitchen/breakfast room, a utility room, a cloakroom, a landscaped garden with plenty of storage, underfloor heating, all in immaculate order throughout. The property provides maximum floor-to-ceiling height and has been designed to maximize natural light. Ideally situated moments from Chiswick High Road, Turnham Green Terrace, and Devonshire Road with its cafes, bars, boutiques, shops, and restaurants (including the Michelin-starred La Trompette), along with numerous transport facilities, and in close proximity to Chiswick's best schools.

Glebe Street, W4

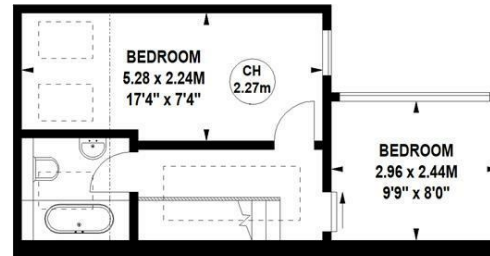
Approximate gross internal area

131.08 sq m / 1411 sq ft

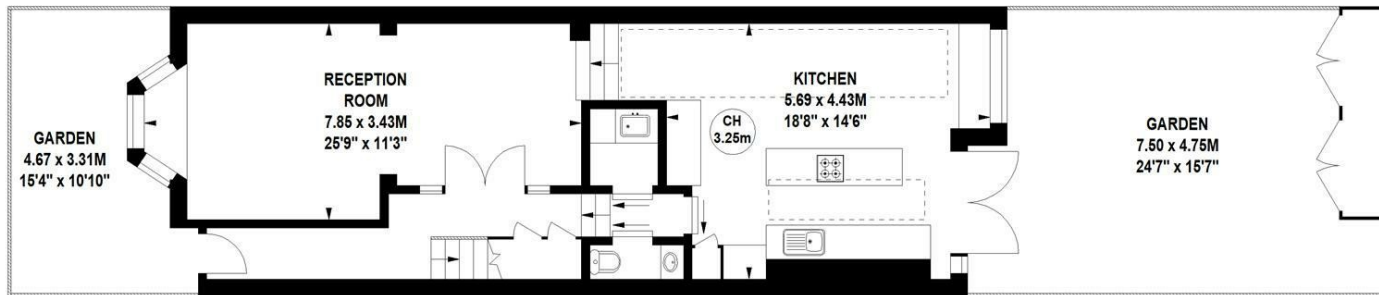
Key :
CH - Ceiling Height



First Floor



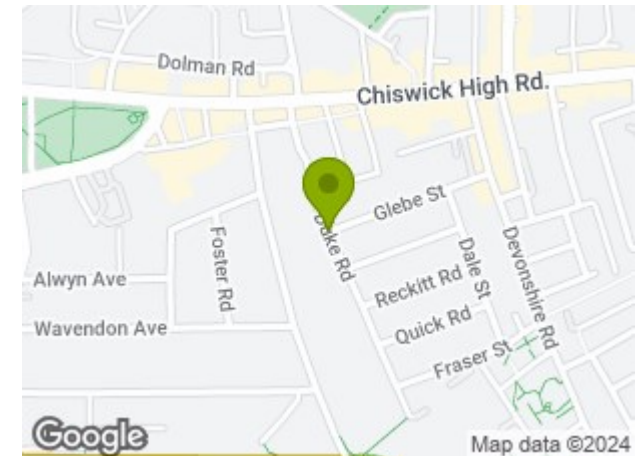
Second Floor



Ground Floor

Not to scale, for guidance only and must not be relied upon as a statement of fact.
All measurements and areas are approximate only

SITUATION



5-7 Turnham Green Terrace, Chiswick, London, W4 1RG

Tel 020 8747 8800

E-mail sales@whitmanandco.com

Website www.whitmanandco.com



MISREPRESENTATION ACT 1967

Whitman & Co. for themselves and for the vendors give notice that these particulars do not constitute any part of, an offer of contract. All statements contained in these particulars are made without responsibility on the part of Whitman & Co. or the vendor. None of the statements contained in these particulars is to be relied upon as statements or representations of facts. Any intending purchaser must satisfy himself by inspection or otherwise as to the correctness of each of the statements contained in these particulars. The vendor does not make or give, and neither Whitman & Co. or any person in their employment has any authority to make or give, any representation or warranty whatever in relation to the property.