



White Swan Mews, London, W4 2AU

Guide Price £799,950

WHITMAN & CO.

SALES · LETTINGS · COMMERCIAL

- Modern family home
- Garage and off street parking
- 31' Double reception room
- Secure gated development
- Three beds/two baths
- Good sized garden

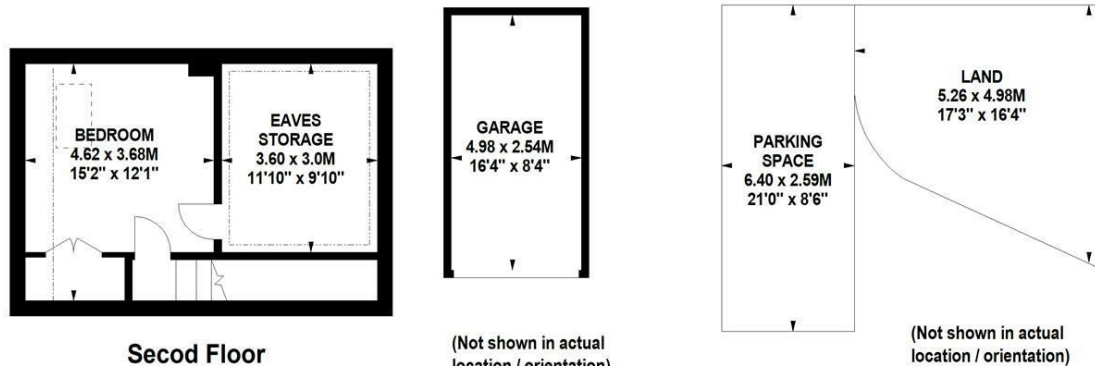
Tenure - Freehold
 Local Authority - Hounslow
 Council Tax - Band F

THE PROPERTY

A modern three bed/two bath family home set within a secure and private gated mews just off the popular Glebe Estate, moments from all the amenities of Chiswick High Road and the River. Comprising an entrance hall, a spacious double reception room with wood floors, a fully integrated kitchen, large private garden, three good-sized bedrooms and two bathrooms (one en-suite), extensive eaves and built-in storage, separate garage with vaulted ceiling providing parking and further storage and allocated off street parking. Transport links include Turnham Green Station (District Line) which is just a short walk away and the A4/M4 for routes in and out of London.

White Swan Mews, W4

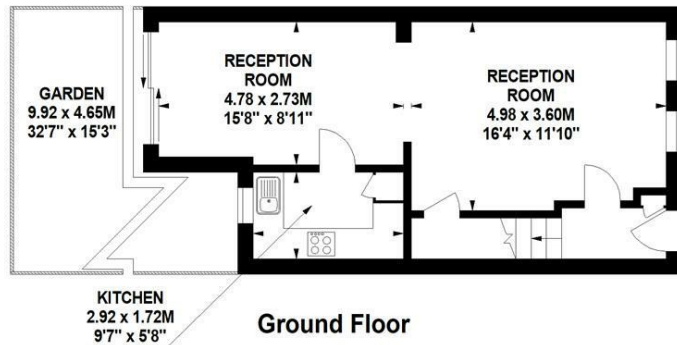
Approximate gross internal area
107.39 sq m / 1156 sq ft
 (Including Eaves Storage)
 Eaves Storage 10.78 sq m / 116 sq ft



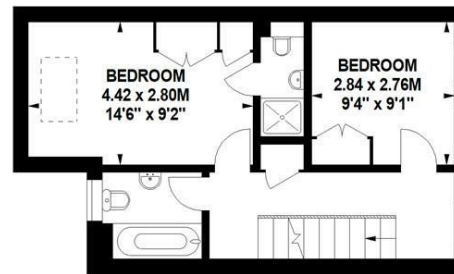
Secod Floor

(Not shown in actual location / orientation)

(Not shown in actual location / orientation)



Ground Floor



First Floor

Not to scale, for guidance only and must not be relied upon as a statement of fact.
 All measurements and areas are approximate only

SITUATION



5-7 Turnham Green Terrace, Chiswick, London, W4 1RG

Tel 020 8747 8800

E-mail sales@whitmanandco.com

Website www.whitmanandco.com



MISREPRESENTATION ACT 1967

Whitman & Co. for themselves and for the vendors give notice that these particulars do not constitute any part of, an offer of contract. All statements contained in these particulars are made without responsibility on the part of Whitman & Co. or the vendor. None of the statements contained in these particulars is to be relied upon as statements or representations of facts. Any intending purchaser must satisfy himself by inspection or otherwise as to the correctness of each of the statements contained in these particulars. The vendor does not make or give, and neither Whitman & Co. or any person in their employment has any authority to make or give, any representation or warranty whatever in relation to the property.