



Duke Road, London, W4 2DH

Guide Price £1,750,000

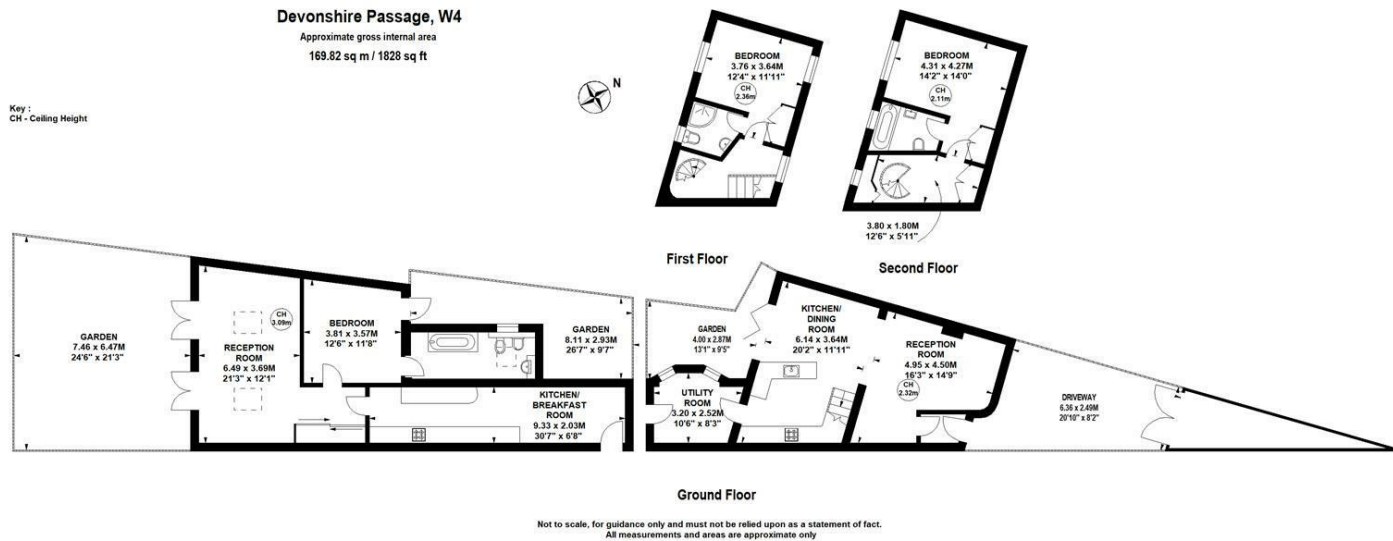
WHITMAN & CO.

SALES · LETTINGS · COMMERCIAL

Tenure - Freehold
 Local Authority - Hounslow
 Council Tax - Band E

THE PROPERTY

A pair of freehold residential properties that can be used independently as two units or as a single residence, ideally located in the popular Glebe Estate, offering close proximity to numerous amenities and with the added benefit of a private south-facing garden. The properties include three bedrooms, three bathrooms, two reception rooms, two kitchen/breakfast rooms, a utility room, south-facing landscaped gardens, and gated off-street parking. The location provides close proximity to the extensive shopping, bar, and restaurant facilities on Chiswick High Road, Turnham Green Tube Station, and Chiswick House and Grounds. No chain.



SITUATION



5-7 Turnham Green Terrace, Chiswick, London, W4 1RG

Tel 020 8747 8800

E-mail sales@whitmanandco.com

Website www.whitmanandco.com



MISREPRESENTATION ACT 1967

Whitman & Co. for themselves and for the vendors give notice that these particulars do not constitute any part of, an offer of contract. All statements contained in these particulars are made without responsibility on the part of Whitman & Co. or the vendor. None of the statements contained in these particulars is to be relied upon as statements or representations of facts. Any intending purchaser must satisfy himself by inspection or otherwise as to the correctness of each of the statements contained in these particulars. The vendor does not make or give, and neither Whitman & Co. or any person in their employment has any authority to make or give, any representation or warranty whatever in relation to the property.