



The Power House, London, W4 1SY

Guide Price £725,000

WHITMAN & CO.

SALES · LETTINGS · COMMERCIAL

- Iconic Grade II listed building
- Balcony and large terrace
- Secure gated parking
- Split-level apartment
- Far-reaching views into central London
- Close to numerous amenities

Tenure - Leasehold
 Lease length - 151 years remaining
 Ground Rent - Peppercorn
 Service Charge - £3903 pa
 Local authority - Hounslow
 Council tax - Band D

THE PROPERTY

A superb split-level apartment set within this iconic Grade II listed building 'The Power House' located just off the High Road in the heart of Chiswick. The apartment is situated at the top of the building with lift access. The accommodation comprises a stunning reception/reception/dining room with vaulted 3.65m high ceiling and French doors onto a balcony with far-reaching views into central London, fitted stainless steel kitchen, master bedroom with doors leading onto a spacious private terrace, further bedroom with mezzanine area, bathroom, separate WC, secure gated parking, automatic lift. Ideally located for Chiswick High Road's shops, cafes and restaurants. Transport links include both Stamford Brook and Turnham Green tube stations, numerous bus routes and the A4/M4 for routes in and out of London.

The Power House, Chiswick High Road, W4

Approximate gross internal area

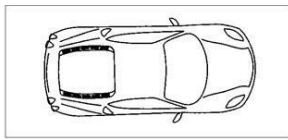
66.89 sq m / 720 sq ft

(Including Mezzanine)

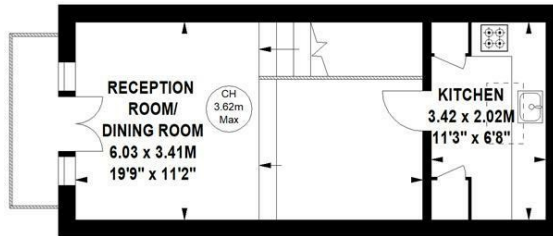
Mezzanine Area

2.42 sq m / 26 sq ft

PARKING SPACE
4.97 x 2.31M
16'4 x 7'7



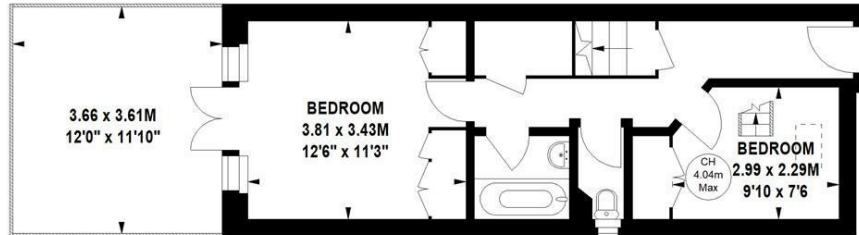
(Not shown in actual location / orientation)



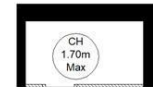
Second Floor



Key :
CH - Ceiling Height



First Floor



Mezzanine

Not to scale, for guidance only and must not be relied upon as a statement of fact.
 All measurements and areas are approximate only

SITUATION



5-7 Turnham Green Terrace, Chiswick, London, W4 1RG

Tel 020 8747 8800

E-mail sales@whitmanandco.com

Website www.whitmanandco.com

