



Antrobus Road, London, W4 5NQ

Guide Price £1,000,000

WHITMAN & CO.

SALES · LETTINGS · COMMERCIAL

- End of terrace
- Sought after location
- Great transport links
- 33' South facing garden
- Large loft
- No chain

Tenure - Freehold
Local Authority - Ealing
Council Tax - Band F

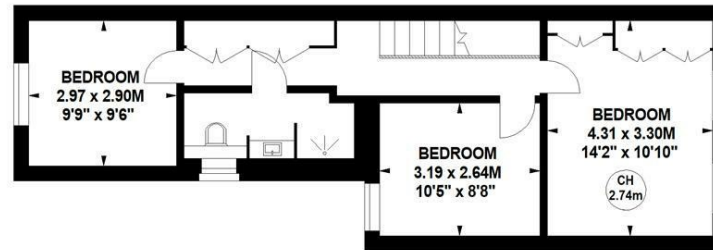
THE PROPERTY

A spacious end of terrace three bedroom period family house with south facing garden and ideally located in this sought after residential area offering close proximity to numerous amenities. This superb property comprises three bedrooms, large loft, shower room, 24' through reception room, 30' kitchen/breakfast room, cloakroom and private 33' south facing garden. Situated within close proximity of Chiswick Park (tube station) and the extensive range of shops, bars and restaurants on Chiswick High Road. No chain.

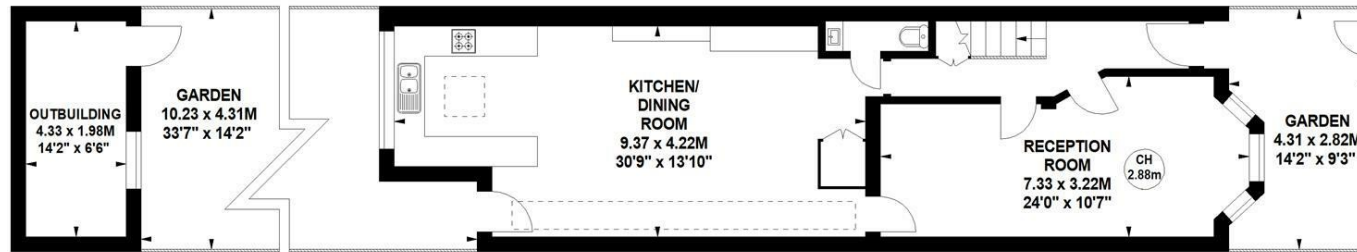
Antrobus Road, W4

Approximate gross internal area

124.39 sq m / 1339 sq ft
(Including Outbuilding)
Outbuilding
8.64 sq m / 93 sq ft



Key :
CH - Ceiling Height



Not to scale, for guidance only and must not be relied upon as a statement of fact.
All measurements and areas are approximate only

SITUATION



5-7 Turnham Green Terrace, Chiswick, London, W4 1RG

Tel 020 8747 8800

E-mail sales@whitmanandco.com

Website www.whitmanandco.com



MISREPRESENTATION ACT 1967

Whitman & Co. for themselves and for the vendors give notice that these particulars do not constitute any part of, an offer of contract. All statements contained in these particulars are made without responsibility on the part of Whitman & Co. or the vendor. None of the statements contained in these particulars is to be relied upon as statements or representations of facts. Any intending purchaser must satisfy himself by inspection or otherwise as to the correctness of each of the statements contained in these particulars. The vendor does not make or give, and neither Whitman & Co. or any person in their employment has any authority to make or give, any representation or warranty whatever in relation to the property.