



Autumn Rise, London, W4 4NG

Offers In Excess Of £500,000

WHITMAN & CO.

SALES · LETTINGS · COMMERCIAL

- Two bedroom garden flat
- Open plan kitchen reception room
- Close to numerous amenities
- Landmark period building
- Private patio garden
- No onward chain

Tenure - Leasehold with share of freehold
 Lease length - 111 years remaining
 Ground rent - Peppercorn
 Service charge - £3572 pa (including reserve fund contribution)
 Local authority - Hounslow
 Council tax - Band E

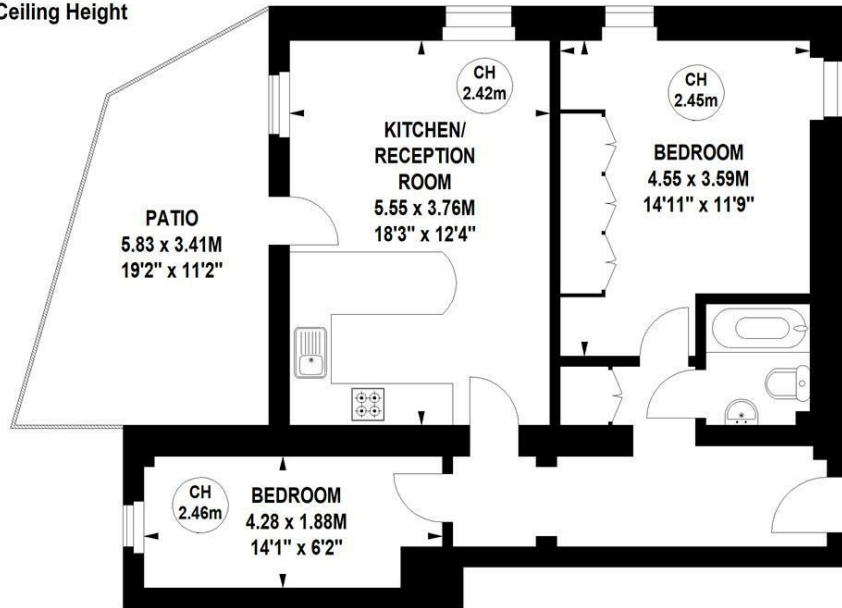
THE PROPERTY

A charming two-bedroom garden flat forming part of this landmark building located just off Turnham Green moments from Chiswick High Road's extensive facilities. The accommodation comprises a spacious entrance hall with fitted cupboards, dual aspect open plan kitchen/reception room with door onto a private patio garden, large dual-aspect double bedroom with fitted wardrobes, modern bathroom, second bedroom, fabulous communal entrance hall, leasehold with share in the freehold. Autumn Rise is in a superb location close to Turnham Green and Chiswick High Road's shops, cafes and restaurants. Transport links include Chiswick Park and Turnham Green Stations, local bus routes and the A4/M4 for routes in and out of London. No onward chain.

Autumn Rise, W4

Approximate gross internal area
61.13 sq m / 658 sq ft

Key :
 CH - Ceiling Height



Lower Ground Floor

Not to scale, for guidance only and must not be relied upon as a statement of fact.
 All measurements and areas are approximate only

SITUATION



5-7 Turnham Green Terrace, Chiswick, London, W4 1RG

Tel 020 8747 8800

E-mail sales@whitmanandco.com

Website www.whitmanandco.com