



Chiswick Lane, London, W4 2LA

£699,950

**WHITMAN & CO.**

SALES · LETTINGS · COMMERCIAL

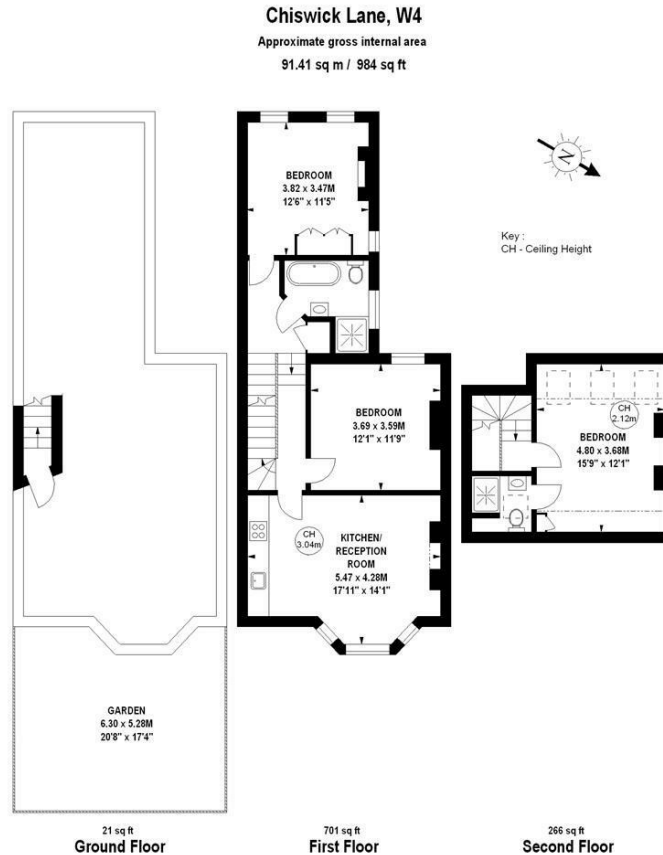
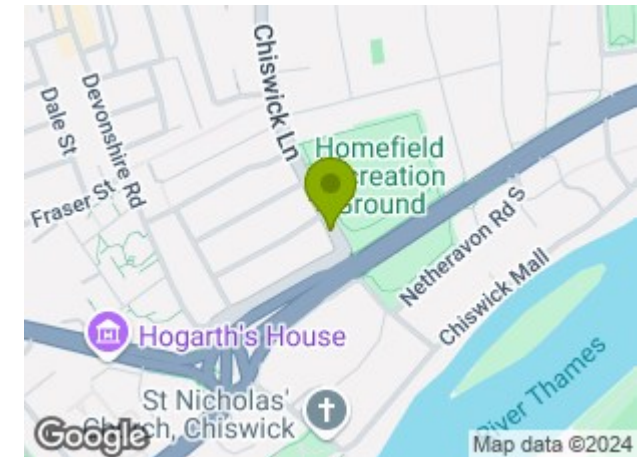
- Recently refurbished throughout
- Split-level conversion flat
- Close to The River Thames
- Green views over local park
- Open plan reception room
- Walking distance to Chiswick High Road

Tenure - Leasehold  
 Lease length - 155 Years remaining  
 Ground Rent - £0  
 Service Charge - as and when  
 Local Authority - Hounslow  
 Council Tax - Band E

## THE PROPERTY

A stylish, split level conversion flat with far reaching views over Homefield Park within a short walk of Chiswick High Road's extensive facilities. The flat has recently been refurbished throughout and comprises; full width reception room with bay window and fitted open plan kitchen, master bedroom with ensuite shower room, two further double bedrooms, main bathroom with roll top bath, front garden, eaves storage, open views front and rear. The flat is within a short walk of Chiswick High Road's shops, cafes and restaurants and only a couple of minutes walk to The River Thames with it's picturesque riverside houses and pubs. Transport links include Stamford Brook and Turnham Green Stations, local bus routes and the A4/M4 for routes in and out of London.

## SITUATION



The floor plan is not to scale and measurements and areas shown are approximate and therefore should be used for illustrative purposes only. The plan has been prepared in accordance with the RICS code of Measuring Practice and whilst we have confidence in the information produced, it must not be relied on. If there is any aspect of particular importance, you should carry out or commission your own inspection of the property.  
 Copyright of FeaturePRO.

5-7 Turnham Green Terrace, Chiswick, London, W4 1RG

Tel 020 8747 8800

E-mail [sales@whitmanandco.com](mailto:sales@whitmanandco.com)

Website [www.whitmanandco.com](http://www.whitmanandco.com)