

## Headford Mews, Sheffield



**£125,000**



2



1



1



62

The apartment is well presented throughout, showcasing modern finishes and a thoughtful layout that maximises space and light. Its prime location means you will be just moments away from a variety of shops, restaurants, and local amenities, ensuring that everything you need is within easy reach. Whether you are a young professional, a couple, or someone looking to downsize, this property provides a perfect blend of style and practicality. Enjoy the benefits of city living while residing in a peaceful and well-maintained environment. This is a fantastic opportunity to rent a lovely apartment in one of Sheffield's most sought-after areas. Do not miss your chance to make this wonderful space your new home.



- Third Floor Flat
- New Carpets Throughout
- Newly Fitted Kitchen
- Good Sized Lounge
- Two Bedrooms
- Newly Fitted Bathroom
- Allocated Parking Space
- EPC Grade D
- Council Tax Band A

Call **01977 285 111** to view this property or visit [www.crownestateagents.com](http://www.crownestateagents.com)

Opening hours:  
Mon - Fri 9am - 5pm  
Sat 10am - 2pm

### Lounge

A good sized living space, freshly decorated and fitted with new carpets.

### Kitchen

A newly fitted kitchen with both under counter and wall mounted units.

### Bedroom One

A good sized double bedroom fitted with a new carpet.

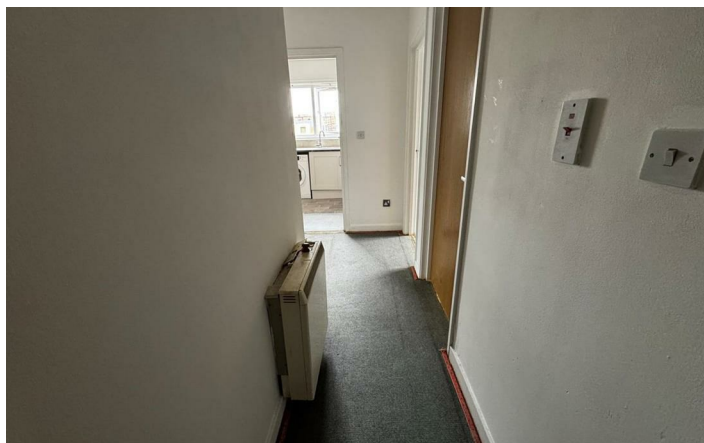
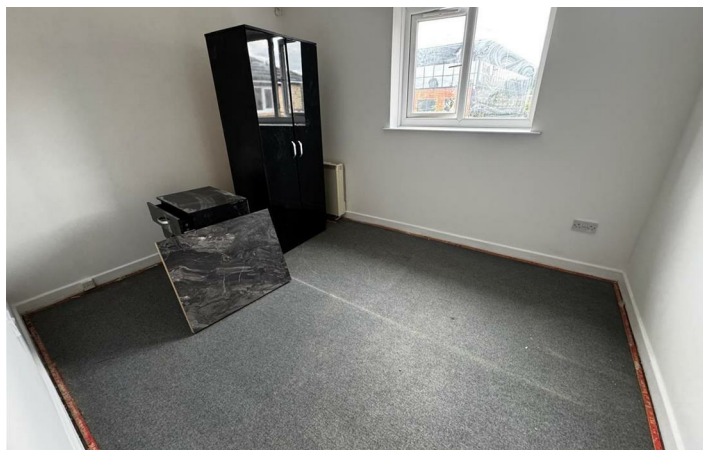
### Bedroom Two

A single bedroom fitted with a new carpet.

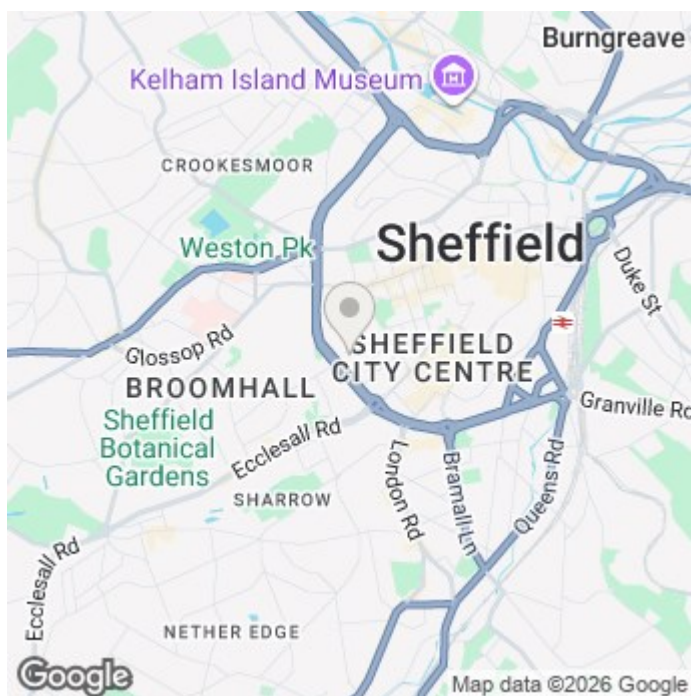
### Family Bathroom

A newly fitted bathroom consisting of a low flush WC, A wash hand basin and panelled bath, with an electric over bath shower and glass shower screen






## Floor Plan



## Energy Efficiency Rating

	Current	Potential
Very energy efficient - lower running costs		
(92 plus) <b>A</b>		
(81-91) <b>B</b>		
(69-80) <b>C</b>		
(55-68) <b>D</b>	<b>62</b>	
(39-54) <b>E</b>		
(21-38) <b>F</b>		
(1-20) <b>G</b>		
Not energy efficient - higher running costs		
<b>England &amp; Wales</b>		EU Directive 2002/91/EC 

Please call our Castle Dwellings Ltd Office on 01977 285 111 if you wish to arrange a viewing appointment for this property or if you require further information.

These particulars, whilst believed to be accurate are set out as a general outline only for guidance and do not constitute any part of an offer or contract. Intending purchasers should not rely on them as statements of representation of fact, but must satisfy themselves by inspection or otherwise as to their accuracy. No person in this firm's employment has the authority to make or give any representation or warranty in respect of the property.

Call **01977 285 111** to view this property or visit [www.crownestateagents.com](http://www.crownestateagents.com)

Opening hours:  
Mon - Fri 9am - 5pm  
Sat 10am - 2pm

Crown Estate Agents: 39-41 Ropergate, Pontefract WF8 1JY & 22 Bank Street, Castleford WF10 1JD.  **CASTLE DWELLINGS**