



CROWN

ESTATE AGENTS

Pelham Street, Worksop



£550 Per Calendar Month



2



1



1



70

****AVAILABLE OCTOBER**** Nestled in the heart of Worksop on Pelham Street, this two-bedroom maisonette is an excellent opportunity for those seeking a comfortable and convenient living space. Spanning the third and fourth floors, this flat offers a unique layout that maximises both space and light. With easy access to local amenities, shops, and transport links, allowing for a seamless lifestyle in this vibrant town. Do not miss the chance to make this lovely maisonette your own.



- Available from October
- Two Storey Living.
- Good Size Reception Room.
- Double Bedrooms.
- Three Piece Bathroom with Shower.
- Gas Central Heating and Double Glazed Throughout.
- Shared Parking.
- Bond £600
- Council Tax Band A
- EPC Grade C

Call **01977 285 111** to view this property or visit www.crownestateagents.com

Opening hours:
Mon - Fri 9am - 5pm
Sat 10am - 2pm

Crown Estate Agents: 39-41 Ropergate, Pontefract WF8 1JY & 22 Bank Street, Castleford WF10 1JD. **CASTLE DWELLINGS**

Lounge

With a double glazed window, a radiator and laminate flooring throughout.

Kitchen

Fitted with base units and housing the boiler.

First Floor

Bedroom One

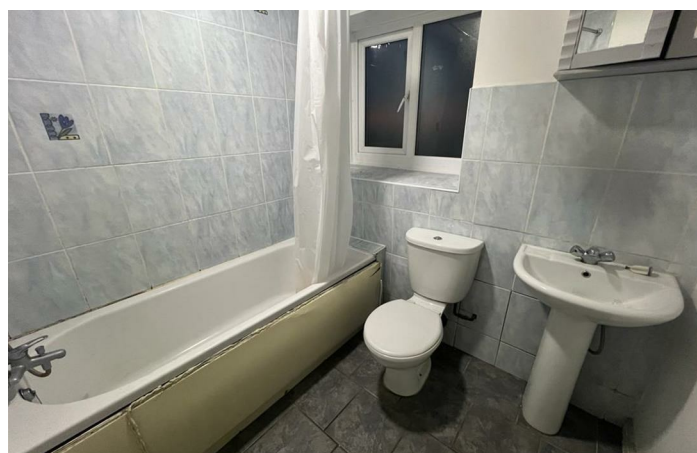
A double bedroom with a radiator and window.

Bedroom Two

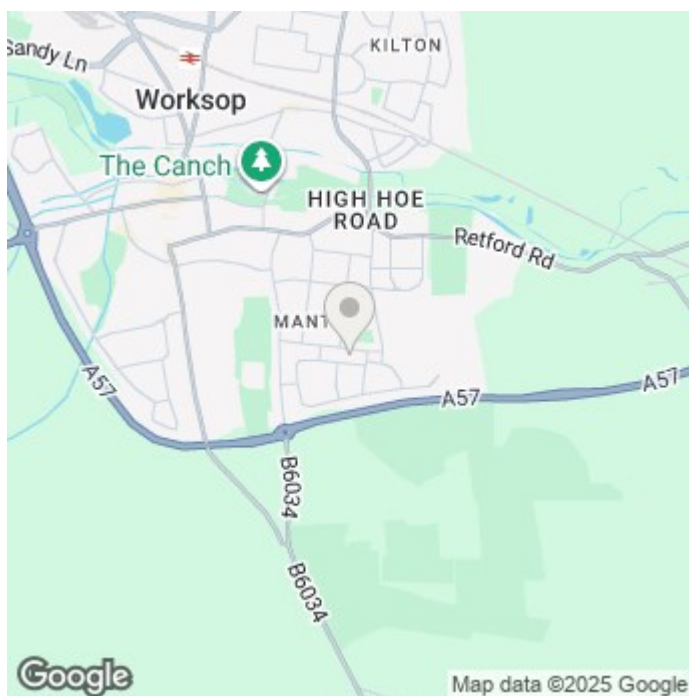
Another double bedroom with a radiator and a window.

Bathroom


Three piece bathroom with a shower over the bath.



Floor Plan



Energy Efficiency Rating


| | Current | Potential |
|---|---------|---|
| Very energy efficient - lower running costs | | |
| (92 plus) A | | |
| (81-91) B | | |
| (69-80) C | | |
| (55-68) D | | |
| (39-54) E | | |
| (21-38) F | | |
| (1-20) G | | |
| Not energy efficient - higher running costs | | |
| | 70 | 75 |
| England & Wales | | EU Directive 2002/91/EC  |

Please call our Crown Estate Agents Office on 01977 600633 if you wish to arrange a viewing appointment for this property or if you require further information.

These particulars, whilst believed to be accurate are set out as a general outline only for guidance and do not constitute any part of an offer or contract. Intending purchasers should not rely on them as statements of representation of fact, but must satisfy themselves by inspection or otherwise as to their accuracy. No person in this firm's employment has the authority to make or give any representation or warranty in respect of the property.

Call **01977 285 111** to view this property or visit www.crownestateagents.com

Opening hours:
Mon - Fri 9am - 5pm
Sat 10am - 2pm

Crown Estate Agents: 39-41 Ropergate, Pontefract WF8 1JY & 22 Bank Street, Castleford WF10 1JD.  **CASTLE DWELLINGS**