



CROWN

ESTATE AGENTS

Heald Street, Castleford



£900 PCM



3



1



1



null

Situated on the desirable Heald Street in Castleford, this beautifully refurbished home is ready and waiting for its next chapter. Freshly finished to a high standard and available immediately, it promises comfort, style, and an unbeatable location. Properties like this don't stay available for long—secure your viewing now and don't miss out.

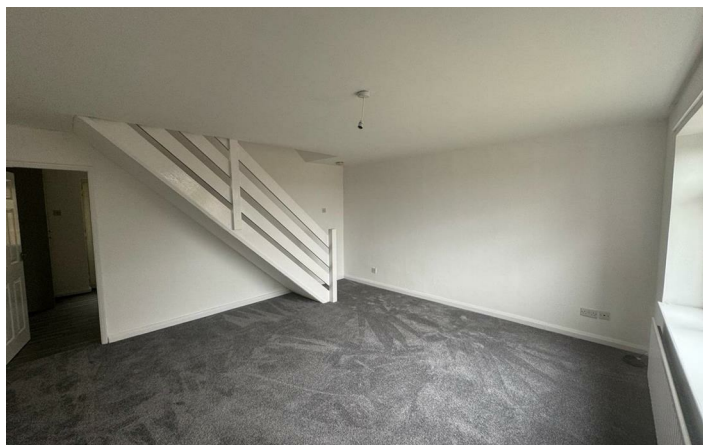


- Lounge
- Dining Kitchen
- Three First Floor Bedrooms
- Family Bathroom
- Gas Central Heating
- Double Glazed Throughout
- Enclosed Front and Rear Garden
- Separate Garage
- £350 BOND!!!
- EPC Grade B

Call **01977 285 111** to view this property or visit www.crownestateagents.com

Opening hours:
Mon - Fri 9am - 5pm
Sat 10am - 2pm


Crown Estate Agents: 39-41 Ropergate, Pontefract WF8 1JY & 22 Bank Street, Castleford WF10 1JD. **CASTLE DWELLINGS**



Floor Plan



Energy Efficiency Rating


	Current	Potential
Very energy efficient - lower running costs		
(92 plus) A		
(81-91) B		
(69-80) C		
(55-68) D		
(39-54) E		
(21-38) F		
(1-20) G		
Not energy efficient - higher running costs		
England & Wales		EU Directive 2002/91/EC 

Please call our Castle Dwellings Ltd Office on 01977 285 111 if you wish to arrange a viewing appointment for this property or if you require further information.

These particulars, whilst believed to be accurate are set out as a general outline only for guidance and do not constitute any part of an offer or contract. Intending purchasers should not rely on them as statements of representation of fact, but must satisfy themselves by inspection or otherwise as to their accuracy. No person in this firm's employment has the authority to make or give any representation or warranty in respect of the property.

Call 01977 285 111 to view this property or visit www.crownestateagents.com

Opening hours:
Mon - Fri 9am - 5pm
Sat 10am - 2pm

Crown Estate Agents: 39-41 Ropergate, Pontefract WF8 1JY & 22 Bank Street, Castleford WF10 1JD.  **CASTLE DWELLINGS**