

Halton Street, Pontefract



£800 Per Calendar Month



2



1



1



68

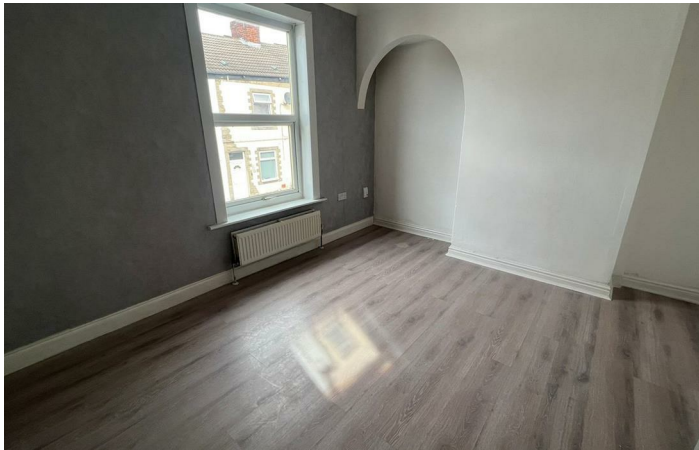
Introducing this beautifully presented, 2 bedroom terraced house on Halton Street, Featherstone. Situated in a convenient location, this house offers easy access to local amenities and transport links, making it perfect for those seeking a comfortable and well-connected lifestyle. One of the highlights of this property is the enclosed rear yard, providing a private outdoor space for relaxation and entertainment. Additionally, the garage included with the house offers ample storage space. With a well-presented interior and a warm, inviting atmosphere, this house is ready for you to move in and make it your own. Don't miss out on the opportunity to make this delightful home in a desirable location your own.



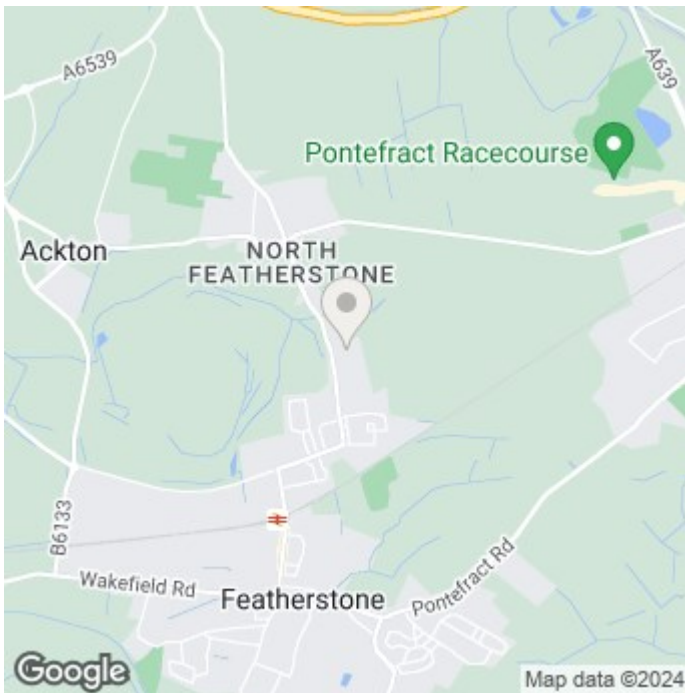
- Good Sized Lounge
- Fitted Kitchen
- One Double Bedroom & One Single Bedroom
- Family Bathroom
- Enclosed Rear Garden
- Single Garage
- EPC Grade D
- Council Tax Band A

Call **01977 285 111** to view this property or visit www.crownestateagents.com

Opening hours:
Mon - Fri 9am - 5pm
Sat 10am - 2pm



Floor Plan



Energy Efficiency Rating		
	Current	Potential
<i>Very energy efficient - lower running costs</i>		
(92 plus) A		89
(81-91) B		
(69-80) C	68	
(55-68) D		
(39-54) E		
(21-38) F		
(1-20) G		
<i>Not energy efficient - higher running costs</i>		
England & Wales	EU Directive 2002/91/EC	

Please call our Crown Estate Agents Office on 01977 600633 if you wish to arrange a viewing appointment for this property or if you require further information.

These particulars, whilst believed to be accurate are set out as a general outline only for guidance and do not constitute any part of an offer or contract. Intending purchasers should not rely on them as statements of representation of fact, but must satisfy themselves by inspection or otherwise as to their accuracy. No person in this firm's employment has the authority to make or give any representation or warranty in respect of the property.

Call **01977 285 111** to view this property or visit www.crownestateagents.com

Opening hours:
Mon - Fri 9am - 5pm
Sat 10am - 2pm