

**Elizabeth Drive, Castleford****£900 Per Calendar Month**

3



1



1



62

Welcoming this charming, spacious three bedroom property to the rental market, currently undergoing refurbishment. This impeccable family home stands in a popular location, well placed for access to local amenities, schools, motorways and the Town centre. **\*\*More photos to follow\*\***

- Spacious Lounge
- Brand New Dining Kitchen In Progress
- Three First Floor Bedrooms
- Brand New Modern Family Bathroom In Progress
- Gas Central Heated and Double Glazed Throughout
- New Flooring and Carpets Throughout
- Tastefully Decorated
- EPC Grade E
- Council Tax Band

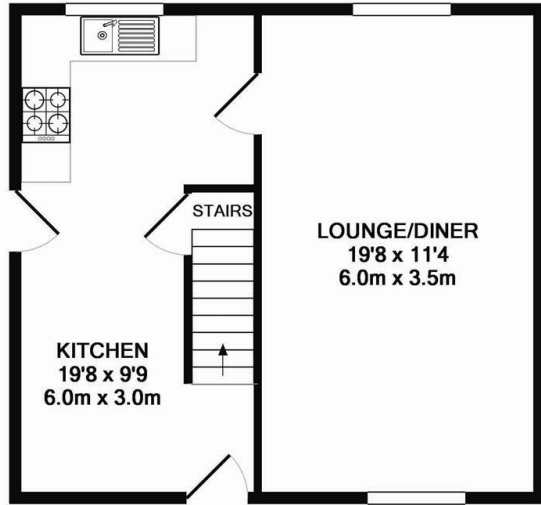
Call **01977 285 111** to view this property or visit [www.crownestateagents.com](http://www.crownestateagents.com)

Opening hours:  
Mon - Fri 9am - 5pm  
Sat 10am - 2pm

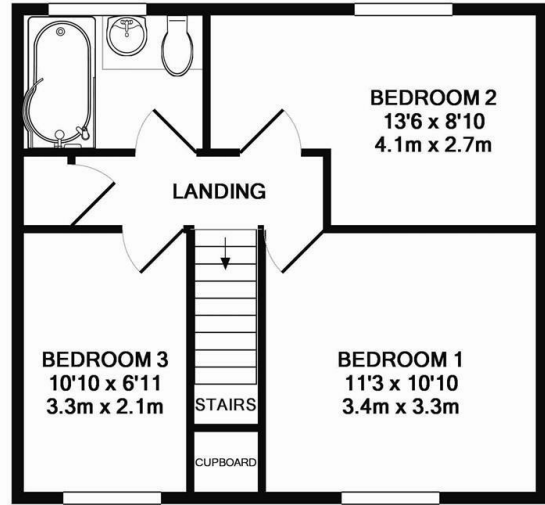




FLOOR PLAN



GROUND FLOOR  
APPROX. FLOOR  
AREA 416 SQ.FT.  
(38.6 SQ.M.)



1ST FLOOR  
APPROX. FLOOR  
AREA 416 SQ.FT.  
(38.6 SQ.M.)

TOTAL APPROX. FLOOR AREA 832 SQ.FT. (77.3 SQ.M.)

Whilst every attempt has been made to ensure the accuracy of the floor plan contained here, measurements of doors, windows, rooms and any other items are approximate and no responsibility is taken for any error, omission, or mis-statement. This plan is for illustrative purposes only and should be used as such by any prospective purchaser. The services, systems and appliances shown have not been tested and no guarantee as to their operability or efficiency can be given  
Made with Metropix ©2016



**Energy Efficiency Rating**

	Current	Potential
Very energy efficient - lower running costs		
(92 plus) <b>A</b>		<b>86</b>
(81-91) <b>B</b>		
(69-80) <b>C</b>		
(55-68) <b>D</b>	<b>62</b>	
(39-54) <b>E</b>		
(21-38) <b>F</b>		
(1-20) <b>G</b>		
Not energy efficient - higher running costs		
<b>England &amp; Wales</b>	EU Directive 2002/91/EC	

Please call our Castle Dwellings Ltd Office on 01977 285 111 if you wish to arrange a viewing appointment for this property or if you require further information.

These particulars, whilst believed to be accurate are set out as a general outline only for guidance and do not constitute any part of an offer or contract. Intending purchasers should not rely on them as statements of representation of fact, but must satisfy themselves by inspection or otherwise as to their accuracy. No person in this firms employment has the authority to make or give any representation or warranty in respect of the property