



**Ramsey Road,
Bristol, BS7 0JF**

**PRICE: Asking Price
£225,000**

Property Features

- Two Bedroom Flat
- First Floor
- Open Plan Living
- Victoria Terrace
- No Onward Chain
- Recently Decorated



Full Description

Entrance Hallway

Stairs rising to 1st floor landing, doors to;

Landing

Door to storage cupboard housing Combi boiler & plumbing for washing machine.

Open plan Living and Kitchen Room

15'2" x 14'5" (4.64 x 4.4)

Open plan, living/kitchen area. Double glazed bay window to front, two radiators, Kitchen area double glazed window to front, stainless steel one and a half bowl sink with mixer tap. Gas hob, oven and integrated fridge and freezer. Tiled splashback & extractor fan.

Bedroom 1

11'5" x 9'4" (3.48 x 2.87)

Double glazed window to rear & double radiator.

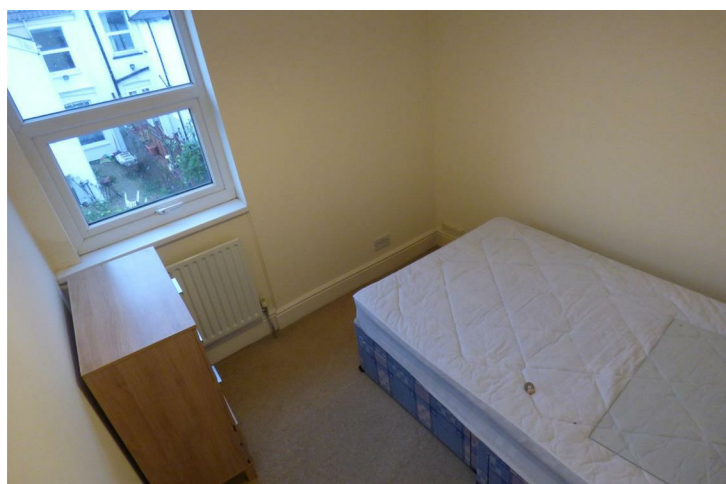
Bedroom 2

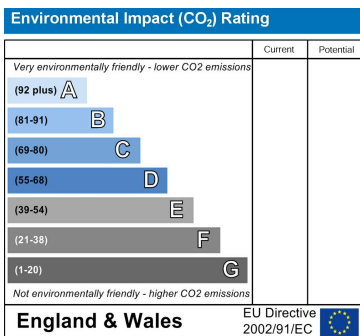
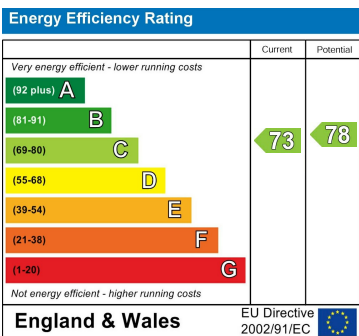
8'8" x 8'5" (2.65 x 2.59)

Radiator and double glazed window to rear.

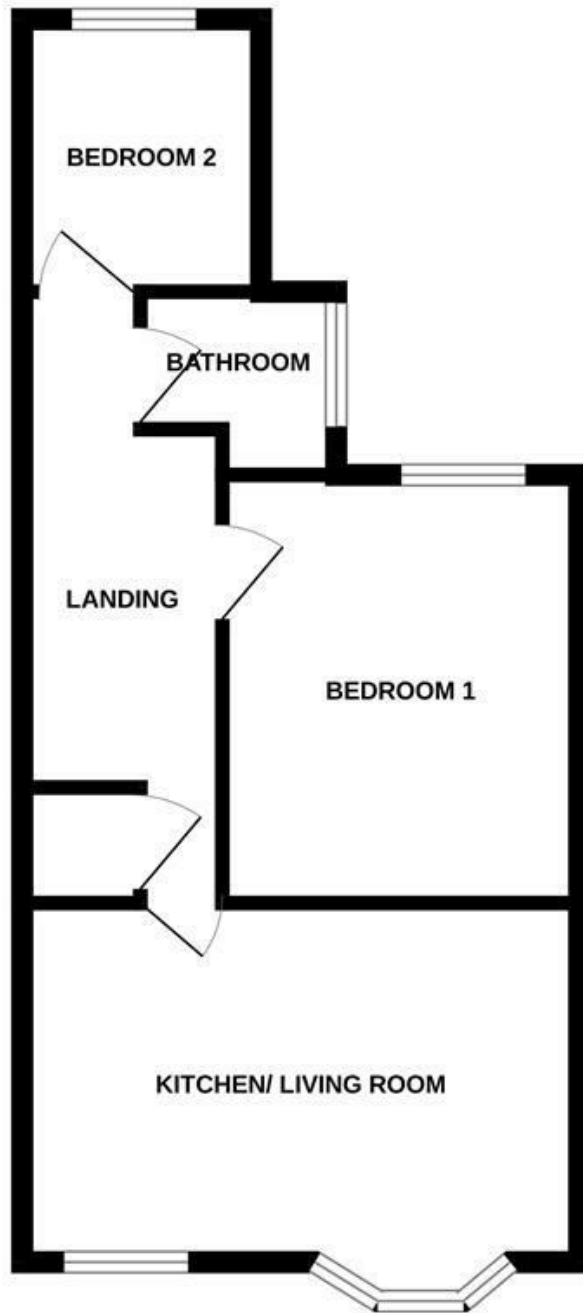
Bathroom

Suite comprising of a panelled bath with mixer tap and shower over pedestal hand, wash basin low level WC, heated towel rail and double glazed obscure window to side extractor Extractor fan, fully tiled walls and fully tiled floor





GROUND FLOOR



Measurements are approximate. Not to scale. Illustrative purposes only
Made with Metropix ©2024

4 Flaxpits Lane
Winterbourne
Bristol
BS36 1JX

www.aj-homes.co.uk
info@aj-homes.co.uk
01454 252140

Agents Note: Whilst every care has been taken to prepare these sales particulars, they are for guidance purposes only. All measurements are approximate are for general guidance purposes only and whilst every care has been taken to ensure their accuracy, they should not be relied upon and potential buyers are advised to recheck the measurements